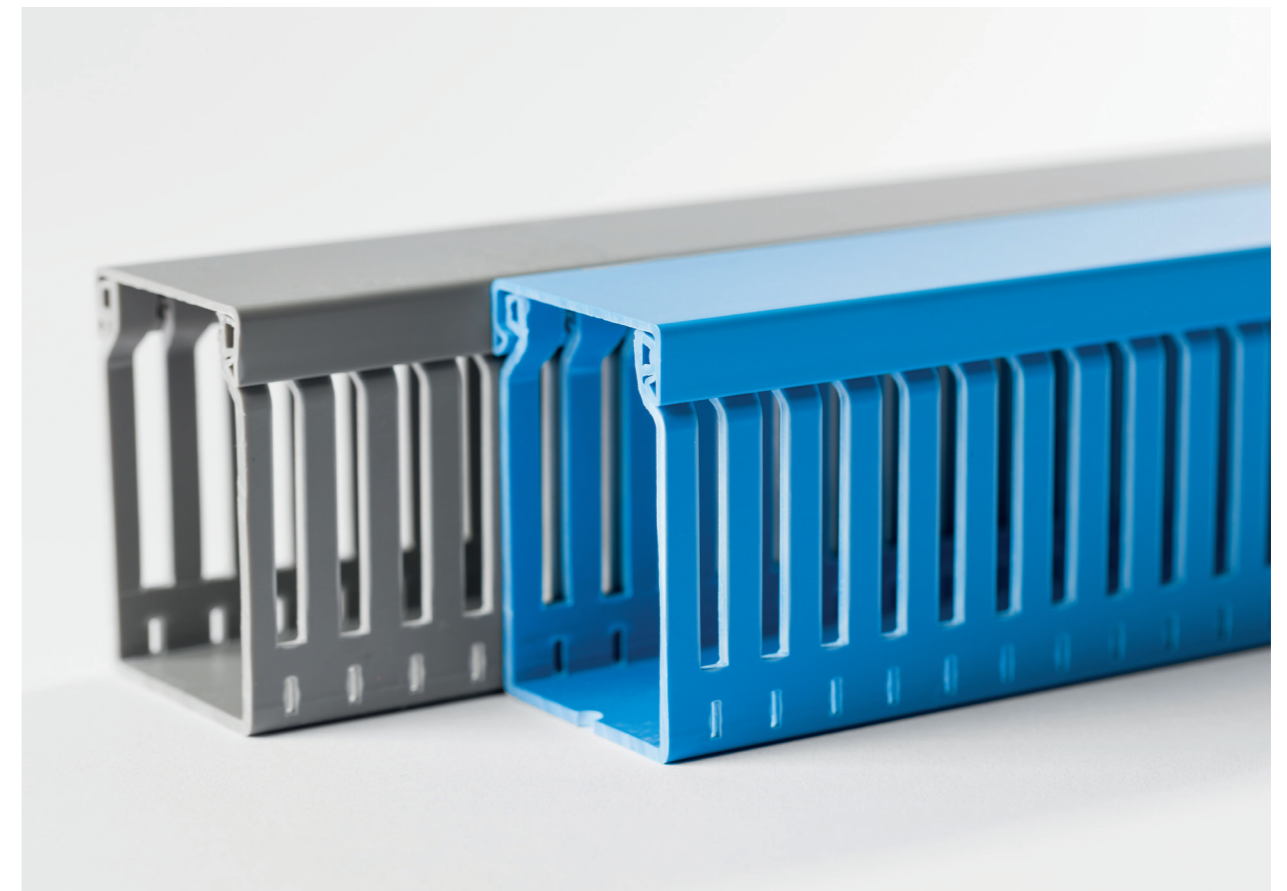


Fabricant spécialiste
depuis 1964



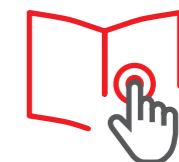
Goulottes de câblage

77

Systeme de distribution
en armoires électriques

Rigidité du profilé pour la facilité de montage.
Couvercle : montage et démontage faciles avec
une grande capacité de rétention.
Découpe propre des languettes jusqu'au bas
du socle.

Informations sur la gamme



Matière première

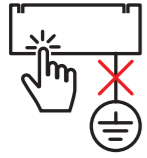
U23X

Valeur ajoutée



Caractéristiques techniques

ÉLECTRIQUE



Isolant. Absence de mise à la terre.

TEMPÉRATURES



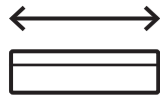
Température minimale de transport
et de stockage: -45°C
Température maximale d'usage: 60°C

FEU



Non propagateur de la flamme.

LONGUEUR DU PROFILE



2 m.

MARQUAGE CE



Conformité à la norme
EN 50085-2-3 : 2010.

Informations détaillées
dans la fiche technique



Déclaration de conformité

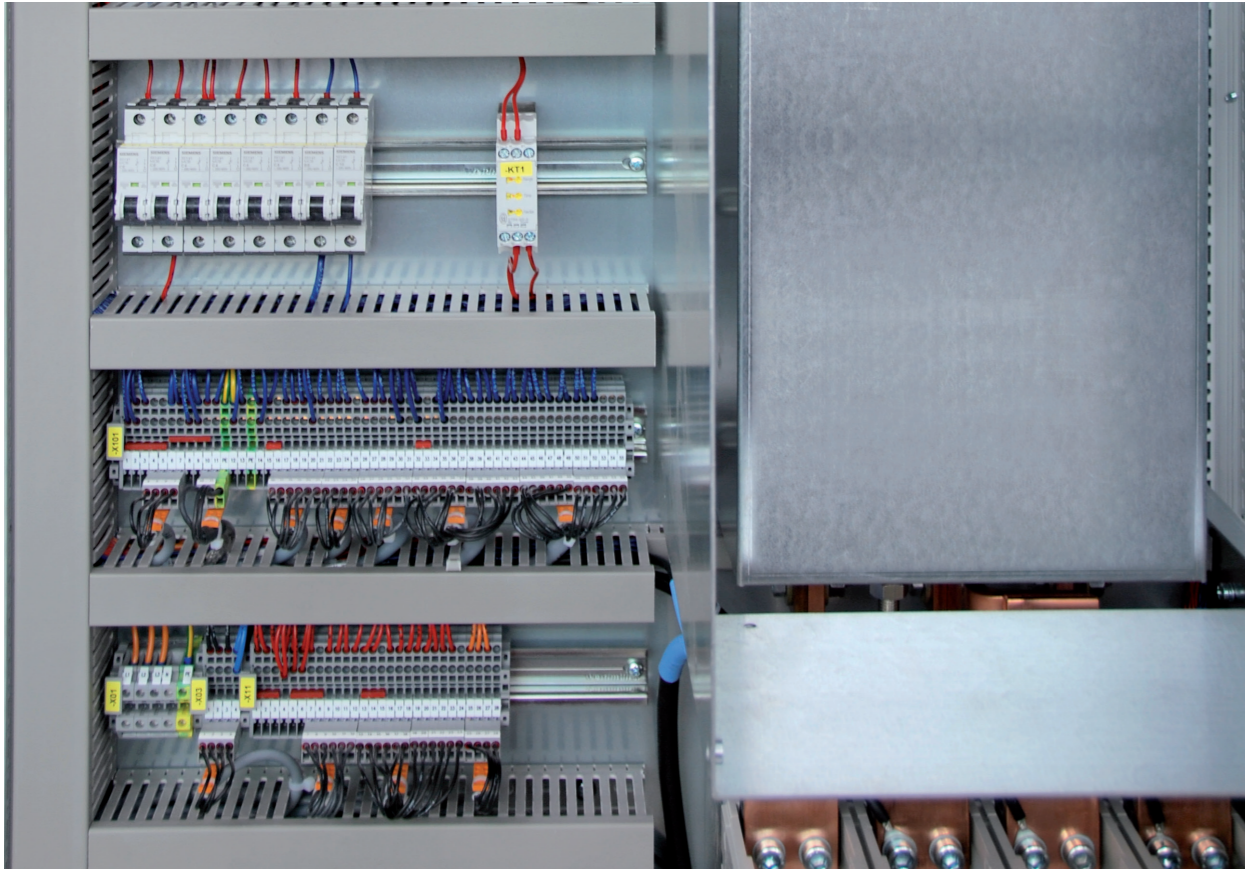


Marques de qualité



Homologations





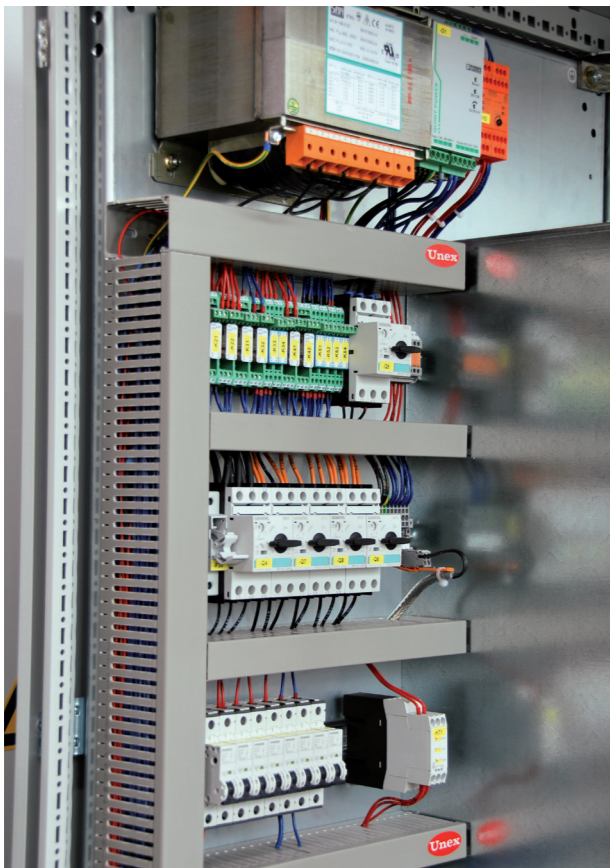
Industrie de la machine spéciale



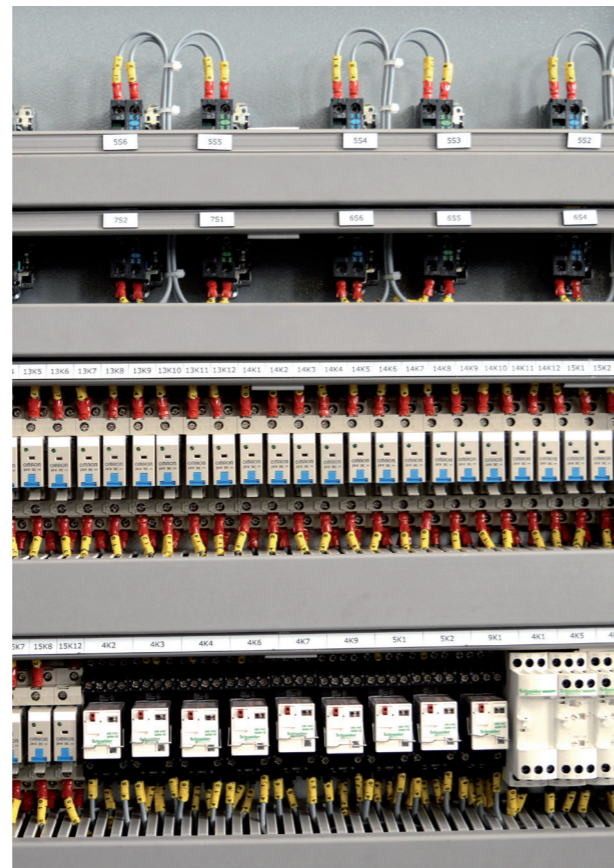
Industrie pétrochimique



Industrie pétrochimique



Industrie de la machine spéciale

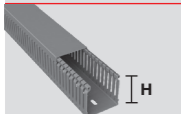



Construction navale

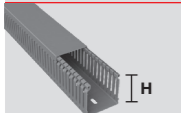




Traitement de l'eau

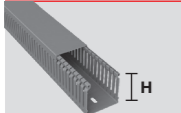


Hauteurs (H) : 18, 25, 30 et 40 mm

| | | Cotes (mm) | | 18x20 | 25x20 | 33x30 | 42x20 | 42x30 | 42x43 | 42x60 |
|---|----------------------------|------------|--|-----------------|-----------------|-----------------|-----------------|-----------------|-----------------|-----------------|
|  | Goulotte de câblage 2 m | | | 18.20.77 | 25.20.77 | 30.30.77 | 40.20.77 | 40.30.77 | 40.40.77 | 40.60.77 |
| | | | | 80 m. 3,07 €/m. | 60 m. 3,34 €/m. | 60 m. 4,64 €/m. | 72 m. 4,55 €/m. | 48 m. 5,69 €/m. | 32 m. 6,55 €/m. | 24 m. 8,04 €/m. |
|  | Agrafe de compactage | | | | | 40850 | | 40850 | | |
| | | | | | | 48 p. 1,09 €/p. | | 48 p. 1,09 €/p. | | |

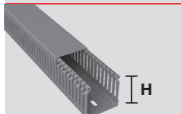


Hauteur (H) 60 mm


| | | Cotes (mm) | | 60x20 | 60x30 | 60x43 | 60x60 | 60x80 | 60x100 | 60x120 |
|---|----------------------------|------------|--|-----------------|-----------------|-----------------|-----------------|----------------------|------------------------------------|----------------------|
|  | Goulotte de câblage 2 m | | | 60.20.77 | 60.30.77 | 60.40.77 | 60.60.77 | 60.80.77 | 60.100.77 | 60.120.77 |
| | | | | 48 m. 6,18 €/m. | 36 m. 7,28 €/m. | 32 m. 8,08 €/m. | 32 m. 9,50 €/m. | 32 m. 11,55 €/m. | 12 m. 14,56 €/m. | 12 m. 16,37 €/m. |
|  | Agrafe | | | | | 40864 | 40865 | 40864 + 40864 | 40864 + 40865 | 40865 + 40865 |
| | | | | | | 48 p. 1,33 €/p. | 48 p. 1,38 €/p. | 48 p. 1,33 €/p. | 48 p. 1,33 €/p. 48 p. 1,38 €/p. | 48 p. 1,38 €/p. |
|  | Agrafe de compactage | | | 40850 | | 40850 | | | | |
| | | | | 48 p. 1,09 €/p. | | 48 p. 1,09 €/p. | | | | |

Hauteur (H) 80 mm

| | | Cotes (mm) | | 80x30 | 80x43 | 80x60 | 80x80 | 80x100 | 80x120 |
|---|----------------------------|------------|--|-----------------|-----------------|------------------|----------------------|------------------------------------|----------------------|
|  | Goulotte de câblage 2 m | | | 80.30.77 | 80.40.77 | 80.60.77 | 80.80.77 | 80.100.77 | 80.120.77 |
| | | | | 28 m. 9,37 €/m. | 24 m. 9,60 €/m. | 24 m. 11,34 €/m. | 24 m. 13,69 €/m. | 12 m. 17,31 €/m. | 12 m. 19,10 €/m. |
|  | Agrafe | | | 40884 | | 40885 | 40884 + 40884 | 40884 + 40885 | 40885 + 40885 |
| | | | | 48 p. 1,35 €/p. | | 48 p. 1,46 €/p. | 48 p. 1,35 €/p. | 48 p. 1,35 €/p. 48 p. 1,46 €/p. | 48 p. 1,46 €/p. |
|  | Agrafe de compactage | | | 40850 | | 40850 | | | |
| | | | | 48 p. 1,09 €/p. | | 48 p. 1,09 €/p. | | | |

Hauteur (H) 100 mm

| | | Cotes (mm) | | 100x43 | 100x60 | 100x80 | 100x100 | 100x150 |
|---|----------------------------|------------|--|------------------|------------------|----------------------|------------------------------------|-------------------|
|  | Goulotte de câblage 2 m | | | 100.40.77 | 100.60.77 | 100.80.77 | 100.100.77 | 100.150.77 |
| | | | | 16 m. 16,39 €/m. | 16 m. 17,59 €/m. | 16 m. 20,07 €/m. | 8 m. 21,95 €/m. | 8 m. 40,10 €/m. |
|  | Agrafe | | | 40894 | 40895 | 40894 + 40894 | 40895 + 40894 | |
| | | | | 48 p. 1,83 €/p. | 48 p. 1,95 €/p. | 48 p. 1,83 €/p. | 48 p. 1,95 €/p. 48 p. 1,83 €/p. | |
|  | Agrafe de compactage | | | 40850 | | 40850 | | |
| | | | | 48 p. 1,09 €/p. | | 48 p. 1,09 €/p. | | |

Voir page suivante 



Hauteur (H) 40 mm

| | | Cotes (mm) | 42x30 |
|--|----------------------|------------|------------------|
| | Goulotte 2 m | | 774030-06 |
| | | | 48 m. 9,48 €/m. |
| | Agrafe de compactage | | 40850 |
| | | | 48 p. 1,09 €/p. |

Hauteur (H) 60 mm

| | | Cotes (mm) | 60x43 | 60x60 |
|--|----------------------|------------|------------------|------------------|
| | Goulotte 2 m | | 776040-06 | 776060-06 |
| | | | 32 m. 12,32 €/m. | 32 m. 14,77 €/m. |
| | Agrafe | | 40864 | 40865 |
| | | | 48 p. 1,33 €/p. | 48 p. 1,38 €/p. |
| | Agrafe de compactage | | 40850 | |
| | | | 48 p. 1,09 €/p. | |

Hauteur (H) 80 mm

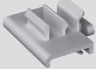

| | | Cotes (mm) | 80x30 | 80x43 | 80x60 | 80x80 | 80x100 | 80x120 |
|--|----------------------|------------|------------------|------------------|------------------|----------------------|----------------------|----------------------|
| | Goulotte 2 m | | 778030-06 | 778040-06 | 778060-06 | 778080-06 | 7780100-06 | 7780120-06 |
| | | | 28 m. 14,57 €/m. | 24 m. 15,32 €/m. | 24 m. 18,12 €/m. | 24 m. 21,71 €/m. | 12 m. 25,90 €/m. | 12 m. 29,09 €/m. |
| | Agrafe | | | 40884 | 40885 | 40884 + 40884 | 40884 + 40885 | 40885 + 40885 |
| | | | | 48 p. 1,35 €/p. | 48 p. 1,46 €/p. | 48 p. 1,35 €/p. | 48 p. 1,46 €/p. | 48 p. 1,46 €/p. |
| | Agrafe de compactage | | 40850 | | 40850 | | | |
| | | | 48 p. 1,09 €/p. | | 48 u. 0,97 €/u | | | |

Hauteur (H) 100 mm

| | | Cotes (mm) | 100x43 | 100x60 | 100x80 | 100x100 |
|--|----------------------|------------|-------------------|-------------------|----------------------|------------------------------------|
| | Goulotte 2 m | | 7710040-06 | 7710060-06 | 7710080-06 | 77100100-06 |
| | | | 16 m. 27,38 €/m. | 16 m. 29,37 €/m. | 16 m. 33,49 €/m. | 8 m. 36,67 €/m. |
| | Agrafe | | 40894 | 40895 | 40894 + 40894 | 40894 + 40895 |
| | | | 48 p. 1,83 €/p. | 48 p. 1,95 €/p. | 48 p. 1,83 €/p. | 48 p. 1,83 €/p. 48 p. 1,95 €/p. |
| | Agrafe de compactage | | 40850 | | 40885 | |
| | | | 48 p. 1,09 €/p. | | 48 p. 1,46 €/p. | |

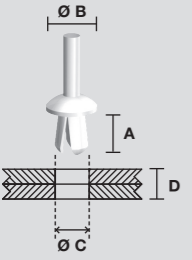
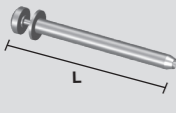
Voir page suivante

Composants de repérage en U43X Gris RAL 7035

| | | |
|---|--|--|
|  | Support profil porte-étiquette (1) | 40801-44 100 p. 70,18 €/100 p. |
|  | Profil porte-étiquettes (1) 2 m | 40802-44 30 m. 3,47 €/m. |



Composants de montage en U60X

| | | | |
|---|------------------------|--|--|
|  | Rivet plastique | A = 6 mm Ø B = 6 mm Ø C = 3,0-3,25 mm D = 1-3 mm | 1303 (2) 5000 p. 5,23 €/100 p. |
| | | A = 8 mm Ø B = 11 mm Ø C = 5,1-5,25 mm D = 2-5 mm | 1305 1000 p. 8,08 €/100 p. |
| | | A = 12 mm Ø B = 11 mm Ø C = 6,1-6,5 mm D = 5-9 mm | 1309 1000 p. 11,83 €/100 p. |
| | | A = 21 mm Ø B = 11 mm Ø C = 6,1-6,5 mm | 1318 1000 p. 16,82 €/100 p. |
|  | Outil à riveter | Application rivets références 1305, 1309 et 1318 L = 225 mm | 1300 1 p. 71,81 €/p. |
| | | Application rivet référence L = 120 mm | 1301 1 p. 41,93 €/p. |

Outil (3)

| | | |
|---|--|----------------------------------|
|  | Outil de découpe Découper rapidement la goulotte | 40902 1 p. 177,23 €/p. |
|---|--|----------------------------------|

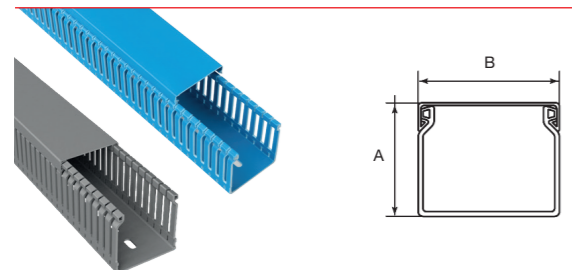
Notes:

- (1) Ne convient pas pour la Réf. 18.20.77 et 100.150.77.
- (2) Pour fixation d'étiquettes. Ne pas utiliser pour fixation des goulottes de câblage.
- (3) Ne convient pas pour les Goulottes 77 de largeur > 60 mm. Découpes à 90° possibles pour les Goulottes 77 ≤ 60 mm. Découpes à 45° possibles pour les Goulottes 77 ≤ 40 mm.

Dimensions (mm)

| Réf. | Dimensions mm | | Type perforation de la base | Cond. m |
|------------|---------------|---------------|-----------------------------|---------|
| | Gris RAL 7030 | Bleu RAL 5012 | | |
| 18.20.77 | | 18 20 | 1 | 80 |
| 25.20.77 | | 25 20 | 1 | 60 |
| 30.30.77 | | 33 30 | 1 | 60 |
| 40.20.77 | | 42 20 | 1 | 72 |
| 40.30.77 | | 42 30 | 1 | 48 |
| 40.40.77 | | 42 43 | 1 | 32 |
| 40.60.77 | | 42 60 | 1 | 24 |
| 60.20.77 | | 60 20 | 1 | 48 |
| 60.30.77 | | 60 30 | 1 | 36 |
| 60.40.77 | 776040-06 | 60 43 | 1 | 32 |
| 60.60.77 | 776060-06 | 60 60 | 1 | 32 |
| 60.80.77 | | 60 80 | 2 | 32 |
| 60.100.77 | | 60 100 | 2 | 12 |
| 60.120.77 | | 60 120 | 2 | 12 |
| 80.30.77 | 778030-06 | 80 30 | 1 | 28 |
| 80.40.77 | 778040-06 | 80 43 | 1 | 24 |
| 80.60.77 | 778060-06 | 80 60 | 1 | 24 |
| 80.80.77 | 778080-06 | 80 80 | 2 | 24 |
| 80.100.77 | 7780100-06 | 80 100 | 2 | 12 |
| 80.120.77 | 7780120-06 | 80 120 | 2 | 12 |
| 100.40.77 | | 100 43 | 1 | 16 |
| 100.60.77 | | 100 60 | 1 | 16 |
| 100.80.77 | | 100 80 | 2 | 16 |
| 100.100.77 | | 100 100 | 2 | 8 |
| 100.150.77 | | 100 150 | 3 | 8 |

Matière : U23X



Compatible avec la norme EN 50085-2-3 et avec les normes qui se substituent à la DIN 43659 et à la NF C68-102

