



Cable management  
system for cabinets  
and equipment

# Slotted trunking

# 77

raw material

**U23X**

colour

**Grey**

**Blue**



77

Slotted  
trunking

## For cable conduction in electrical and communications cabinets

- Higher safety for the installation assured by **the trunking's sturdiness**.
- The cover is easy to mount and remove.
- **The cover will stay in place and will not slip in any mounting position.**
- No cutting tips or edges.
- Possibility to cut until the base for better branching.

## Raw material

U23X

Trunking

U24X





Retainers

U43X

Compliant



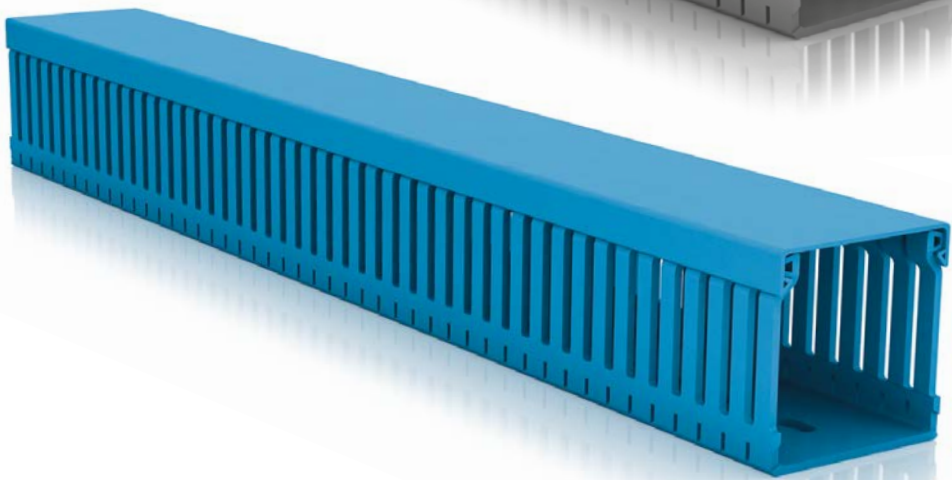
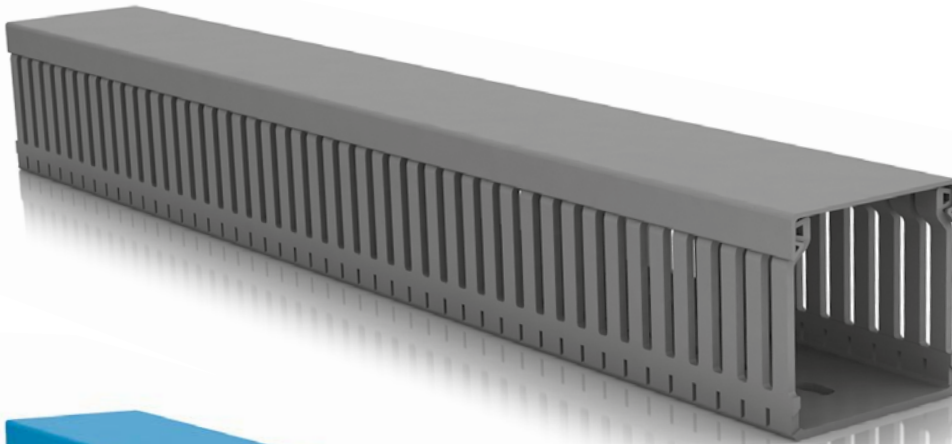
## Technical characteristics

Electrical	Maximum service temperature	Minimum transport and storage temperature	In front of fire
 <p>EN 50085-2-3*</p> <p>Insulating.</p> <hr/> <p>No earthing required.</p>	 <p>+60°C</p> <p>EN 50085-2-3*</p>	 <p>-45°C</p> <p>EN 50085-2-3*</p>	 <p>Glow-fire test at 960°C.</p> <hr/> <p>Non flame propagating.</p> <hr/> <p>Reaction to fire, Class M1 acc./ UNE 201010.</p> <hr/> <p>Flammability degree UL94: V0. Does not spread fire by dripping.</p>

\* BS EN 50085-2-3 is the UK implementation of EN 50085-2-3.

Slotted  
trunking

77 **U23X**  
Grey / Blue



Length

**2 m**

Colour

**Grey**

**RAL 7030**

**Blue**

**RAL 5012**

### Quality marks



### Approvals



Germanischer Lloyd



Bureau Veritas



Φ3 от 22.07.08 N 123-Φ3  
ГОСТ P 53313-2009

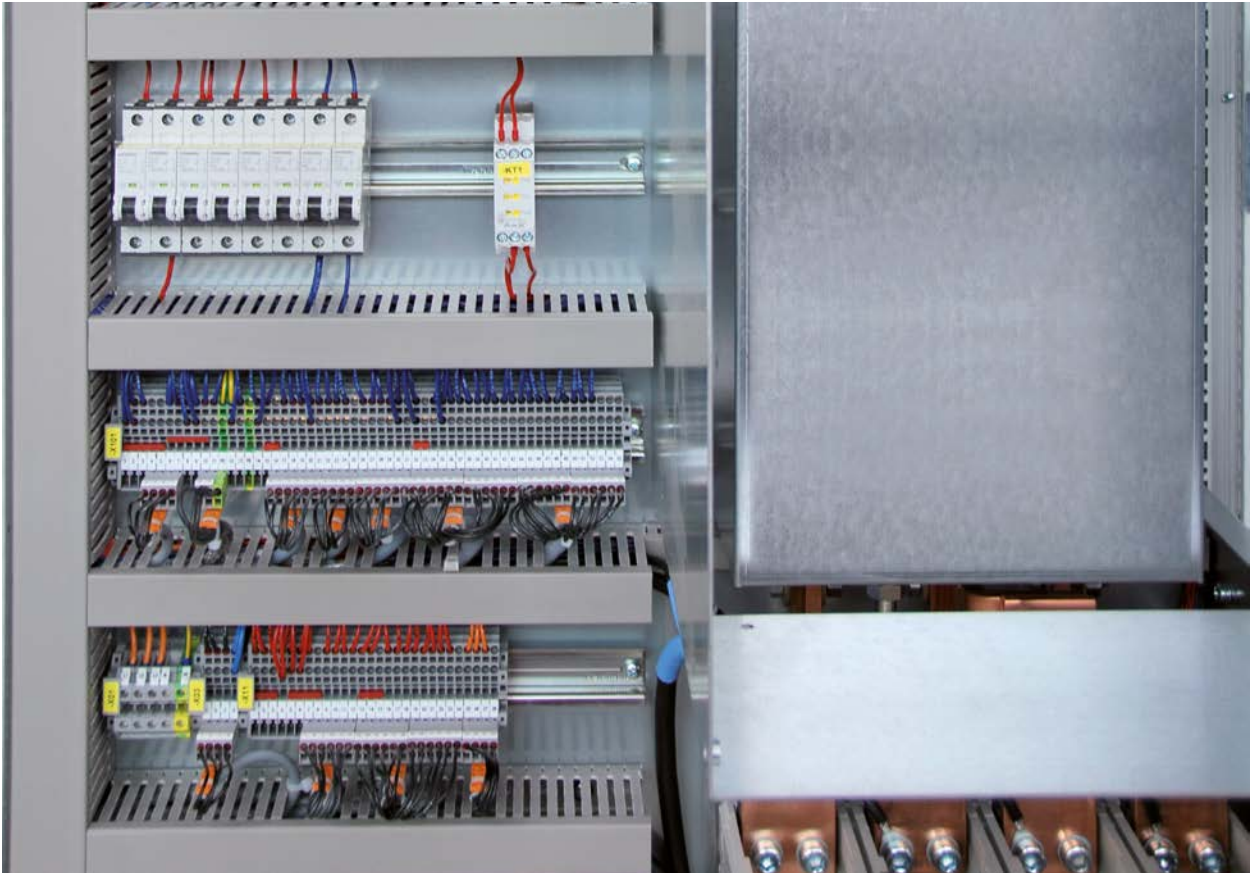


Canadian Standards Association

### Conformity declaration



See updated technical  
information of each  
part number on  
[www.unex.net](http://www.unex.net)



Machinery industry



Machinery industry



Naval construction





Petrochemical industry



Petrochemical industry



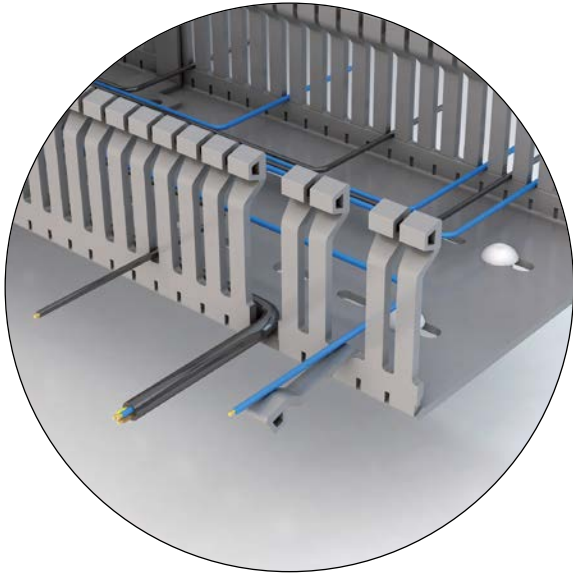
Water treatment

# 77

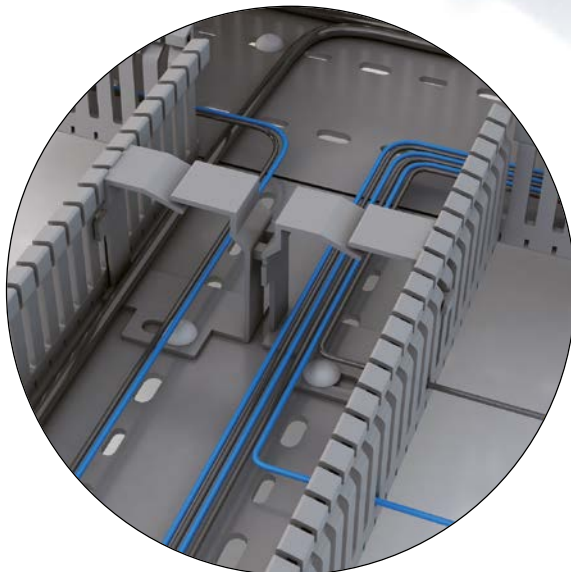
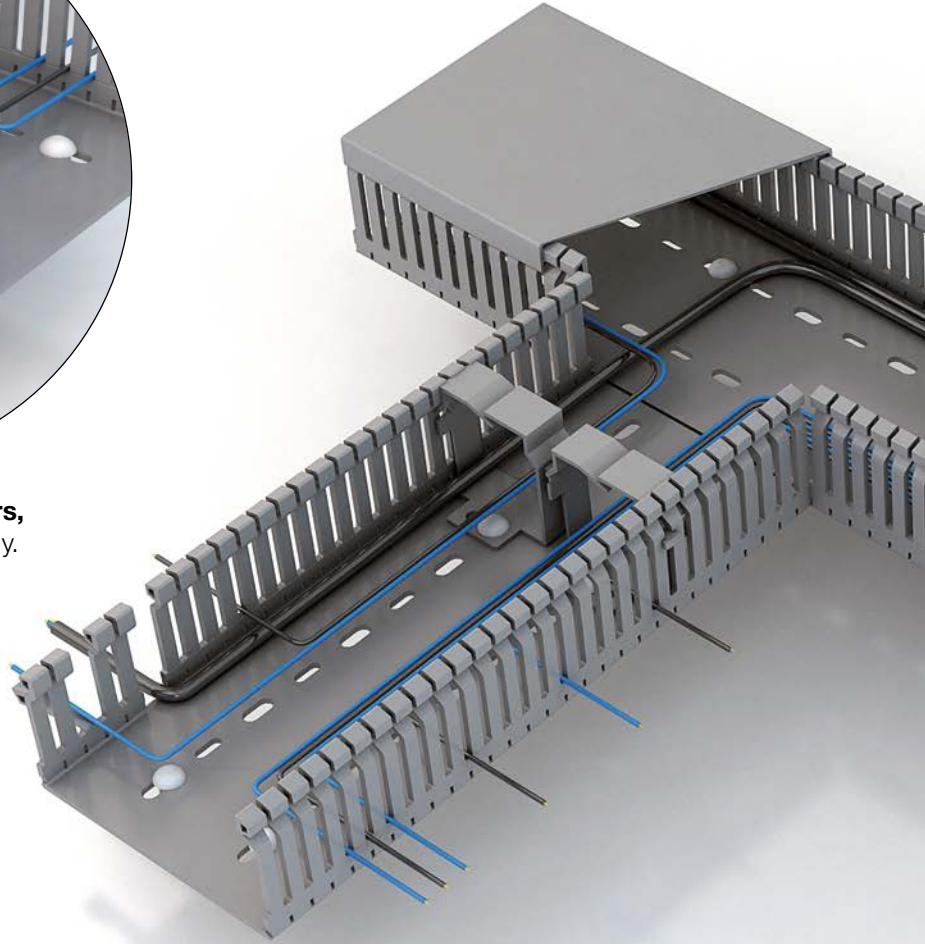
**U23X**  
Grey / Blue

Slotted  
trunking

## Easy mounting and maintenance

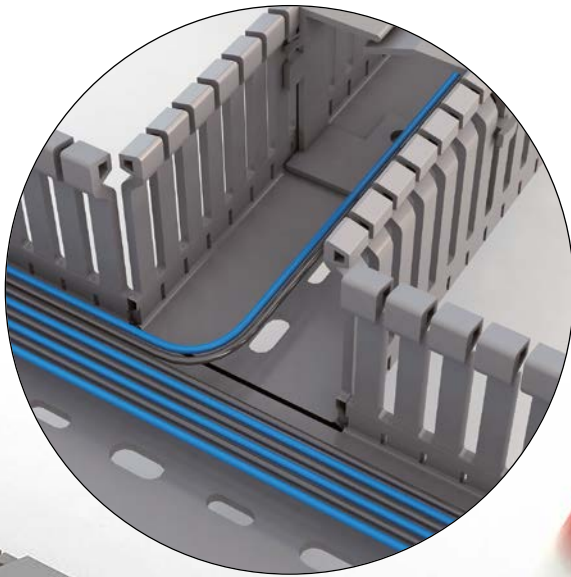


**Flexible and resistant fingers,**  
which do not break accidentally.

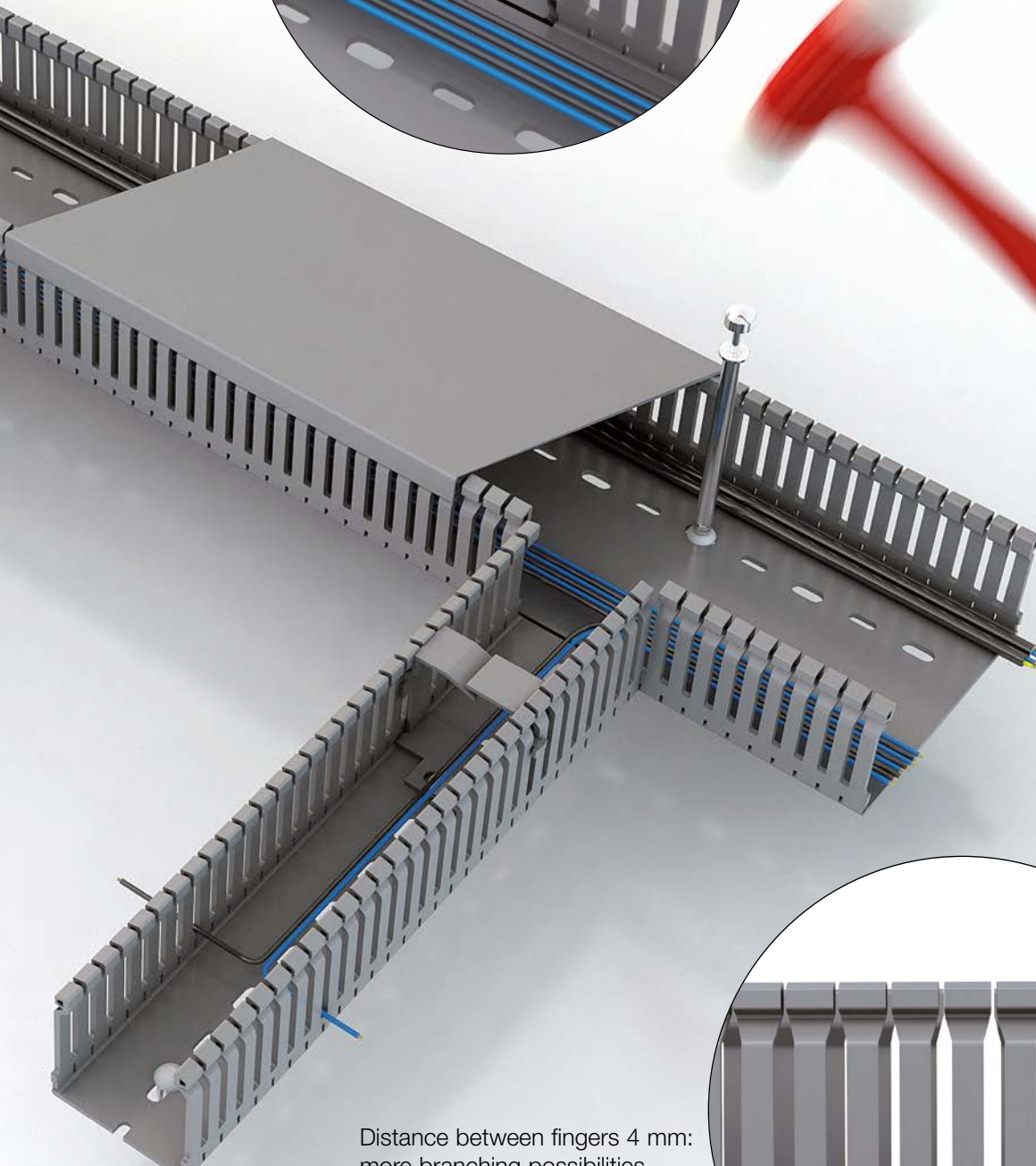


**Rigid cable retainer:** avoids deformations and allows circuit classification. Only 6 part numbers for 14 trunking sizes.

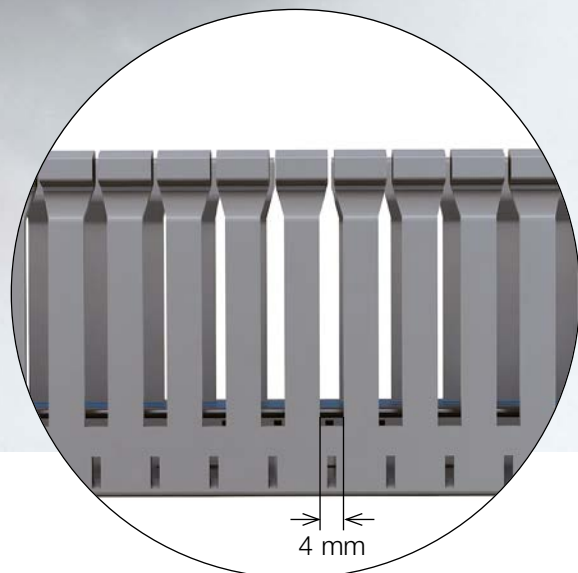




Clean cut of the sidewall to the base.  
Does not damage the cables insulation.  
Maximum branching room and cross-section.  
Quicker mounting and easier cable connections.



Distance between fingers 4 mm:  
more branching possibilities.



77

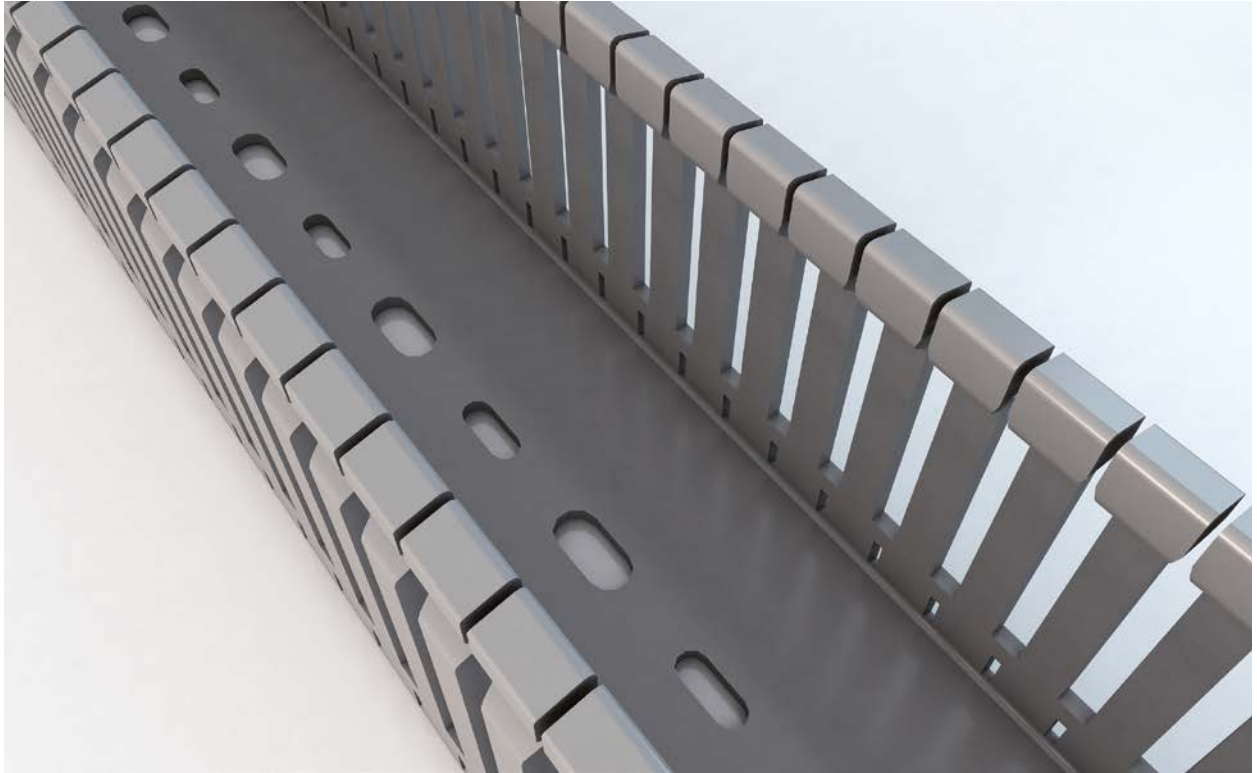
U23X  
Grey / BlueSlotted  
trunking

# A product with added value

## Burr-free slotted trunking

---

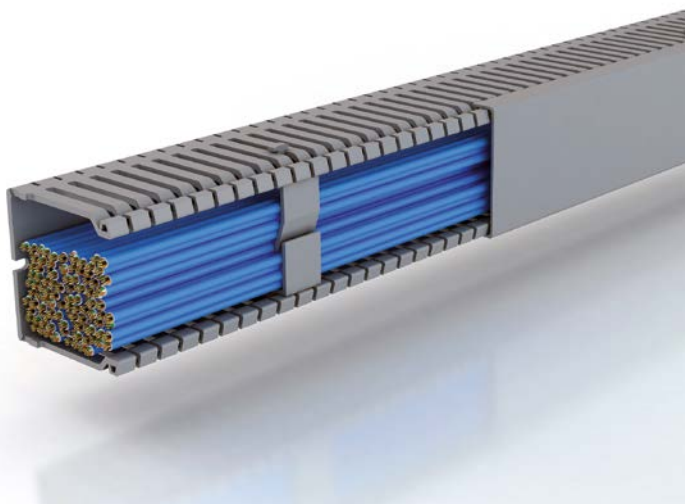
Smooth design, without burrs or sharp edges: does not damage the user's hand nor the cables during mounting. The cables insulation is not affected during transportation or in applications submitted to vibrations.



## Cover

---

Easy to mount and remove.



In horizontal position, the fingers do not bend and the cover does not fall.



In vertical position, the cover does not slide.



## Solid and sturdy trunking

---

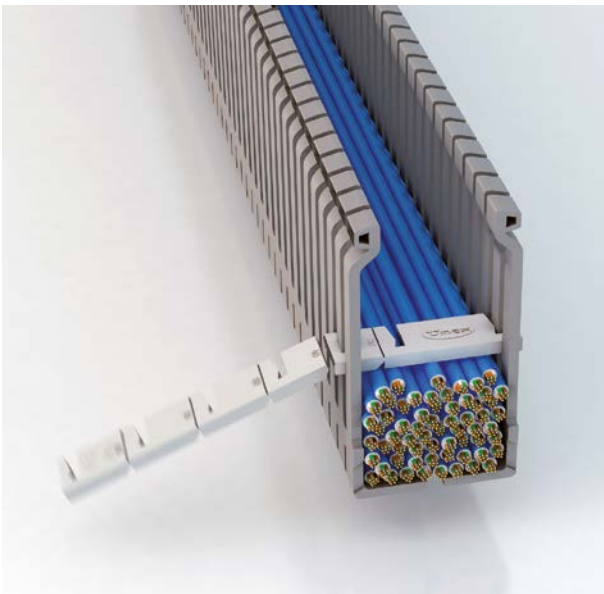
Due to its solidity and sturdiness, the trunking can be suspended between rails. Few fixings required.



## Cable compactor

---

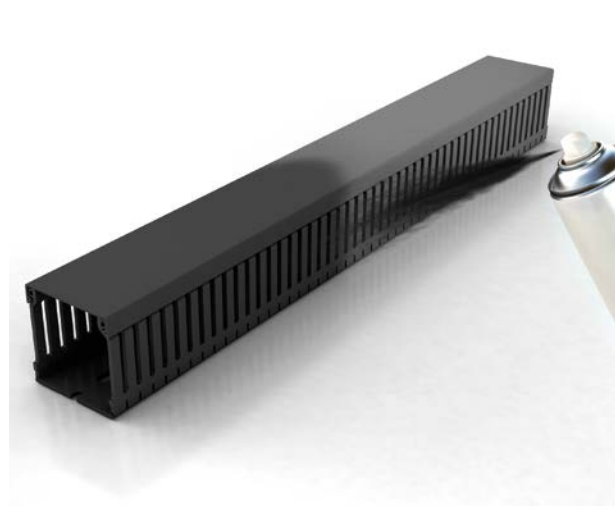
Only one part number for all trunking sizes: the retainer can be cut according to the trunking's width and can be fixed at any adjustable height.



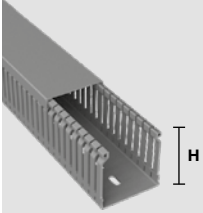

## Possibility to paint

---




Unex slotted trunkings can be painted with the most common paints.






Heights = 18, 25, 30 and 40 mm

		Slotted trunking width (mm)		20	30	40
		Grey RAL 7030				
	<b>Slotted trunking</b> 2 m	H = 18 mm	<b>18.20.77</b>			
		H = 25 mm	<b>25.20.77</b>			
		H = 30 mm		<b>30.30.77</b>		
		H = 40 mm	<b>40.20.77</b>	<b>40.30.77</b>	<b>40.40.77</b>	
	<b>Cable compactor</b> U43X		<b>40850</b>			




Height = 60 mm

		Slotted trunking width (mm)		20	30	40
	<b>Slotted trunking</b> 2 m H = 60 mm	<b>60.20.77</b>	<b>60.30.77</b>	<b>60.40.77</b>		
	<b>Cable retainer</b> U24X			<b>40864</b>		
	<b>Cable compactor</b> U43X		<b>40850</b>			

Height = 80 mm

		Slotted trunking width (mm)		20	30	40
	<b>Slotted trunking</b> 2 m H = 80 mm		<b>80.30.77</b>	<b>80.40.77</b>		
	<b>Cable retainer</b> U24X			<b>40884</b>		
	<b>Cable compactor</b> U43X		<b>40850</b>			

Height = 100 mm

		Slotted trunking width (mm)		20	30	40
	<b>Slotted trunking</b> 2 m H = 100 mm			<b>100.40.77</b>		
	<b>Cable retainer</b> U24X			<b>40894</b>		
	<b>Cable compactor</b> U43X			<b>40850</b>		



	60	80	100	120	150
	<b>40.60.77</b>				
	<b>40850</b>				

	60	80	100	120	150
	<b>60.60.77</b>	<b>60.80.77</b>	<b>60.100.77</b>	<b>60.120.77</b>	
	<b>40865</b>	<b>40864 + 40864</b>	<b>40864 + 40865</b>	<b>40865 + 40865</b>	
	<b>40850</b>				

	60	80	100	120	150
	<b>80.60.77</b>	<b>80.80.77</b>	<b>80.100.77</b>	<b>80.120.77</b>	
	<b>40885</b>	<b>40884 + 40884</b>	<b>40884 + 40885</b>	<b>40885 + 40885</b>	
	<b>40850</b>				

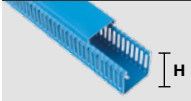
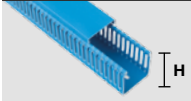


	60	80	100	120	150
	<b>100.60.77</b>	<b>100.80.77</b>	<b>100.100.77</b>		<b>100.150.77</b>
	<b>40895</b>	<b>40894 + 40894</b>	<b>40894 + 40895</b>		
	<b>40850</b>				



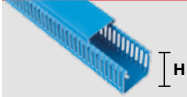
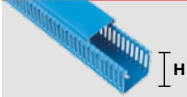


77 **U23X**  
Grey/Blue

Slotted  
trunking

Height = 60 mm

		Slotted trunking width (mm)		
		30	40	60
 <p><b>Blue</b> RAL 5012</p>				
 <p><b>Slotted trunking</b> 2 m H = 60 mm</p>		<b>776040-06</b>	<b>776060-06</b>	
 <p><b>Cable retainer</b> <b>U24X</b></p>		<b>40864</b>	<b>40865</b>	
 <p><b>Cable compactor</b> <b>U43X</b></p>		<b>40850</b>		

Height = 80 mm

		Slotted trunking width (mm)		
		30	40	60
 <p><b>Blue</b> RAL 5012</p>				
 <p><b>Slotted trunking</b> 2 m H = 80 mm</p>		<b>778030-06</b>	<b>778040-06</b>	<b>778060-06</b>
 <p><b>Cable retainer</b> <b>U24X</b></p>		<b>40884</b>	<b>40885</b>	
 <p><b>Cable compactor</b> <b>U43X</b></p>		<b>40850</b>		

80

100

120

150



80

100

120

150

778080-06

7780100-06


7780120-06

40884  
+  
40884

40884  
+  
40885

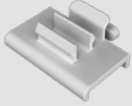

40885  
+  
40885

40850

See next page 

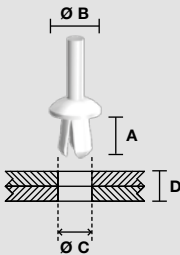
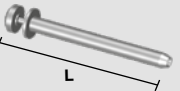
# Functional and mounting elements for Slotted trunking 77

## Fittings

	<b>Label-holder profile support</b> <b>U43X</b>	<b>40801 (1)</b>
	<b>Label-holder profile</b> 2 m <b>U23X</b>	<b>40802 (1)</b>


(1) Except for part no. 18.20.77 and 100.150.77.

## Fixing elements in **UGOX**


	<b>Translucent</b>	
	A = 6 mm Ø B = 6 mm Ø C = 3.0-3.25 mm D = 1-3 mm	<b>1303 (1)</b>
	A = 8 mm Ø B = 11 mm Ø C = 5.1-5.25 mm D = 2-5 mm	<b>1305</b>
	A = 12 mm Ø B = 11 mm Ø C = 6.1-6.5 mm D = 5-9 mm	<b>1309</b>
	A = 21 mm Ø B = 11 mm Ø C = 6.1-6.5 mm D = 10-18 mm	<b>1318</b>
	Riveting tool: can be used with part no. 1305, 1309 and 1318 L = 225 mm	<b>1300</b>
	Riveting tool: can be used with part no. 1303 L = 120 mm	<b>1301</b>

(1) To fix labels. Do not use to fix trunkings.

## Tools

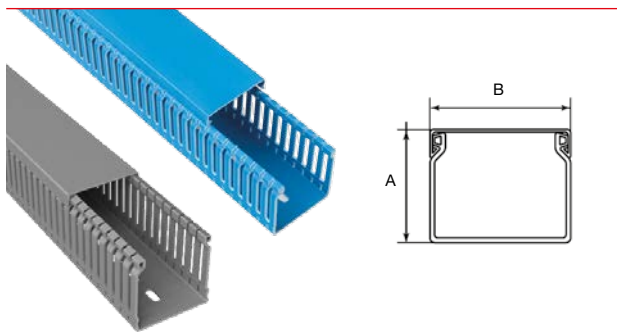
	<b>Cutting tool</b> To cut the main trunking	<b>40902 (1)</b>
---	---	------------------

(1) Cut at 90° for trunkings width ≤ 60 mm Cut at 45° for trunkings width ≤ 40 mm.

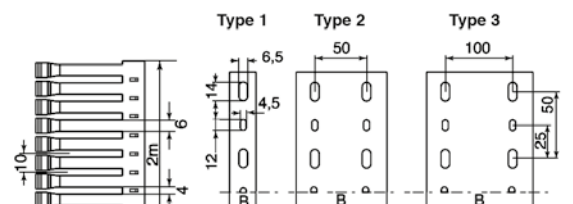
See next page 



# Sizes (mm)



Fixing holes compatible with EN 50085-2-3\*



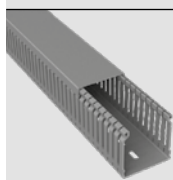
Part. no.		Sizes mm		Fixing holes type	Pack m
RAL 7030 GREY	RAL 5012 BLUE	A	B		
18.20.77		18	20	1	80
25.20.77		25	20	1	60
30.30.77		33	30	1	60
40.20.77		42	20	1	72
40.30.77		42	30	1	48
40.40.77		42	43	1	32
40.60.77		42	60	1	24
60.20.77		60	20	1	48
60.30.77		60	30	1	36
60.40.77	776040-06	60	43	1	32
60.60.77	776060-06	60	60	1	32
60.80.77		60	80	2	32
60.100.77		60	100	2	12
60.120.77		60	120	2	12
80.30.77	778030-06	80	30	1	28
80.40.77	778040-06	80	43	1	24
80.60.77	778060-06	80	60	1	24
80.80.77	778080-06	80	80	2	24
80.100.77	7780100-06	80	100	2	12
80.120.77	7780120-06	80	120	2	12
100.40.77		100	43	1	16
100.60.77		100	60	1	16
100.80.77		100	80	2	16
100.100.77		100	100	2	8
100.150.77		100	150	3	8

Material: U23X


\* BS EN 50085-2-3 is the UK implementation of EN 50085-2-3.

# Useful cross-sections (mm<sup>2</sup>)


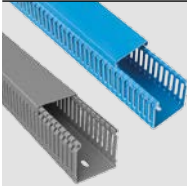






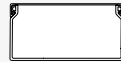
## Recommended cable capacities

Part no.		Sizes (mm)							
Grey RAL 7030		18x20	25x20	33x30	42x20	42x30	42x43	42x60	
		234	322	728	586	940	1460	2112	
Cables V250 Number of cables (Filling ratio 1.5)*	0.5 mm <sup>2</sup>	43	53	116	96	154	237	346	
	0.75 mm <sup>2</sup>	28	35	77	63	102	157	229	
Cables H05/07 V-K Number of cables (Filling ratio 1.5)*	1 mm <sup>2</sup>	18	23	50	41	66	102	150	
	1.5 mm <sup>2</sup>	14	17	37	30	49	75	110	
	2.5 mm <sup>2</sup>	9	12	26	21	34	52	76	


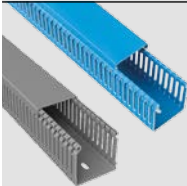






\* Note: For other types of cables, the necessary section results from the application of the following formula: Section = Cable section x no. of cables x 1.5.

See next page 


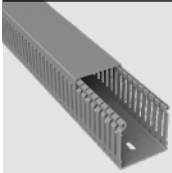





Sizes (mm)    60x20    60x30    60x43    60x60    60x80    60x100    60x120

Part no.		<b>60.20.77</b>	<b>60.30.77</b>	<b>60.40.77</b> <b>776040-06</b>	<b>60.60.77</b> <b>776060-06</b>	<b>60.80.77</b>	<b>60.100.77</b>	<b>60.120.77</b>
	<b>RAL 7030 / RAL 5012</b>	 870	 1387	 2137	 3092	 4225	 5362	 6380
Cables H05/07 V-K Number of cables (Filling ratio 1.5)*	1 mm <sup>2</sup>	62	98	150	219	299	384	450
	1.5 mm <sup>2</sup>	45	72	111	161	220	283	331
	2.5 mm <sup>2</sup>	32	50	77	112	153	196	230
	4 mm <sup>2</sup>	25	40	61	89	122	157	184
	6 mm <sup>2</sup>	14	23	35	51	70	90	106

Sizes (mm)    80x30    80x43    80x60    80x80    80x100    80x120

Part no.		<b>80.30.77</b> <b>778030-06</b>	<b>80.40.77</b> <b>778040-06</b>	<b>80.60.77</b> <b>778060-06</b>	<b>80.80.77</b> <b>778080-06</b>	<b>80.100.77</b> <b>7780100-06</b>	<b>80.120.77</b> <b>7780120-06</b>
	<b>RAL 7030 / RAL 5012</b>	 1865	 2874	 4128	 5630	 7177	 8572
Cables H05/07 V-K Number of cables (Filling ratio 1.5)*	1 mm <sup>2</sup>	132	203	291	399	504	606
	1.5 mm <sup>2</sup>	97	149	215	293	371	446
	2.5 mm <sup>2</sup>	68	104	149	204	258	309
	4 mm <sup>2</sup>	54	83	118	162	206	247
	6 mm <sup>2</sup>	31	47	68	92	118	142

Sizes (mm)    100x43    100x60    100x80    100x100    100x150

Part no.		<b>100.40.77</b>	<b>100.60.77</b>	<b>100.80.77</b>	<b>100.100.77</b>	<b>100.150.77</b>
	<b>RAL 7030</b>	 3585	 5179	 7110	 9000	 13450
Cables H05/07 V-K Number of cables (Filling ratio 1.5)*	1 mm <sup>2</sup>	253	366	502	633	994
	1.5 mm <sup>2</sup>	186	271	369	465	732
	2.5 mm <sup>2</sup>	129	188	257	324	508
	4 mm <sup>2</sup>	103	149	204	258	402
	6 mm <sup>2</sup>	59	85	117	148	201

\* Note: For other types of cables, the necessary section results from the application of the following formula:  
Section = Cable section x nr. cables x 1.5.