



Cable conduction
system for
HVAC

Trunking 31

raw material

U23X

colour

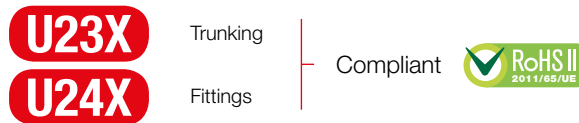
White



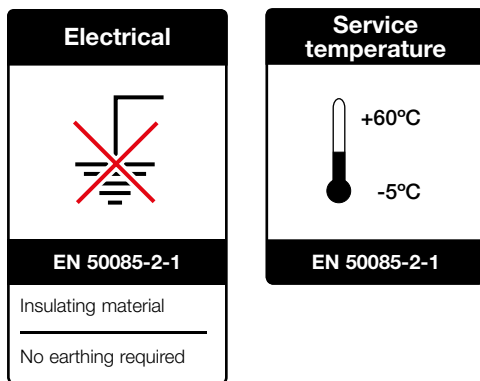
For fixing and connecting pipes in split type air conditioning systems

- Innovative design that facilitates the handling of pipes and speeds up the air conditioning system assembly process.
- Solid mounting bases that make the system more secure.
- Robust, rectilinear-shaped system that guarantees an aesthetically pleasing, durable finishing.
- It does not scratch or get dirty during transport and installation due to the **protective film**.
- Standard white trunking that you can customize as you please by painting the desired colour, using any brand available in the market.
- Easy and fast to paint due to its porous touch, achieved through our formulated raw material.
- **Insulating material.**

Raw material



Technical characteristics

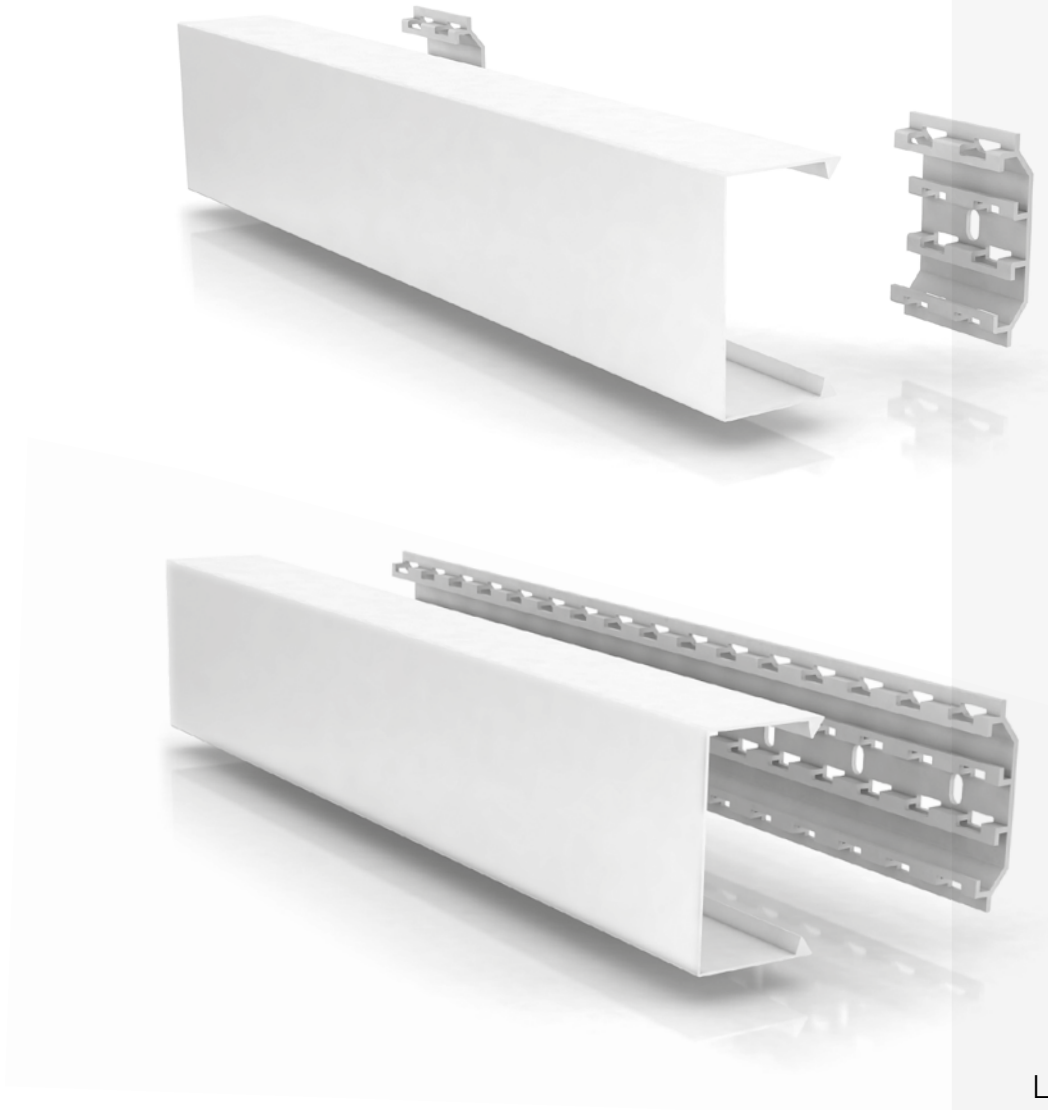


Trunking

31

U23X

White



Length

2 m

Colour

White

RAL 9010

Quality marks



Conformity declaration



See updated technical
information of each
part number on
www.unex.net



Work spaces: office



Apartment building renovation



Housing



Work spaces: shop

Two assembly systems to choose from, depending on the base

Detachable strip for HVAC with pre-cuts

- Freedom to choose the length of the base without needing to cover the whole wall section.
- Easy to measure and align the sections without using tools.
- Good finishing system, because it absorbs the wall unevenness.



Single base plate for HVAC

- A solid piece for each cover width, which ensures system robustness.
- No need to alter or cut the base to install it.
- Fast assembly, because the base is directly positioned on the wall following the straight level line marked previously on the wall.



Easy to install pipes and cables

- Possibility of choosing the most suitable Unex cable ties dimension, up to 7.6 mm width, ensuring the anchoring of pipes and cables.
- The base slots allow new cable ties to be placed without disassembling material already installed.
- The fastening of pipes and cables is completely independent.



C-shape cover for HVAC

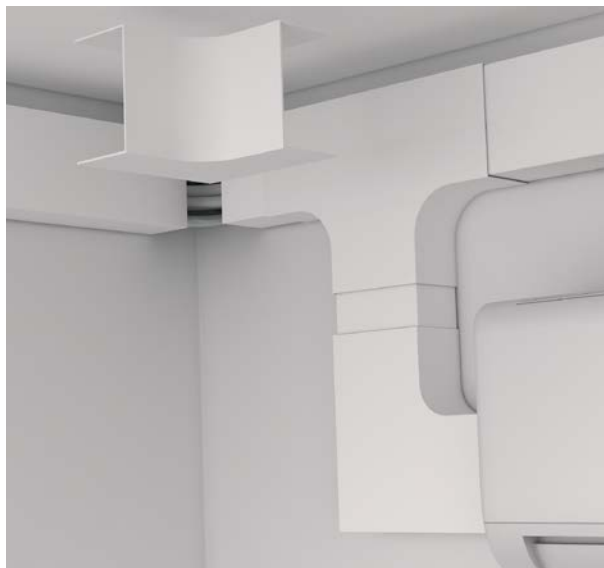
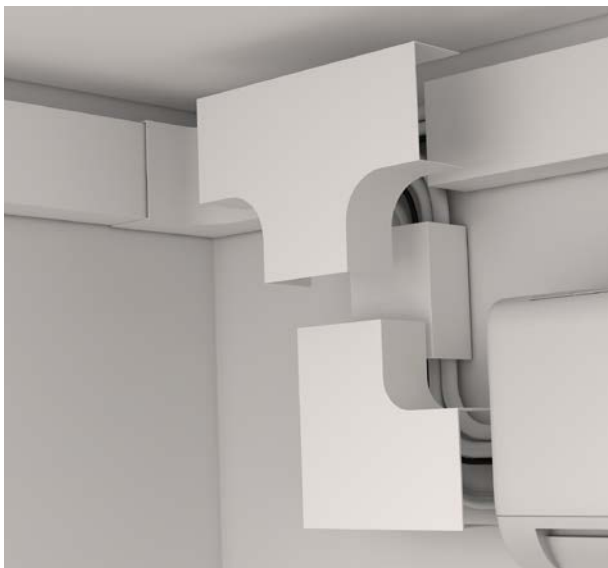
- Rectilinear design that integrates with the construction elements, giving the system a nice finishing.
- Its rigidity ensures good anchoring to the base and prevents deformations.
- A single part number for the two types of base.



Fittings

- Fittings with bending radii suitable for the laying of the pipes that guarantee a correct function of the installation.
- Robust, single piece design, assembled above the cover, hiding the cuts.
- Greater length of the fittings to better adapt to the cover and absorb the wall unevenness.





C-shape cover with protective film

No scratches or stains: protected with film, our Trunking 31 arrives in perfect conditions to the site. Once the assembly is finished, removing the film is easy and fast, leaving a clean and neat installation.



31

U23X

White

Trunking

	Trunking sizes (mm)	35x35	45x75	60x75	60x100
	<p>Grey RAL 7035 (ref. 31XXX-04)</p> <p>White RAL 9010 (ref. 31XXX-02)</p>				
	Detachable strip 2 m		31075-04		31100-04
	Single base plate		31175-04		31101-04
	Pipe clamp Drain pipe Ø16 - 20 mm	31130-04			
	C-shape cover 2 m	31010-02	31021-02	31032-02	31033-02

Fittings in U24X

	Flat angle	31210-02	31221-02	31232-02	31233-02
	External angle	31260-02	31271-02	31282-02	31283-02
	Internal angle	31310-02	31321-02	31332-02	31333-02
	Joint cover piece	31510-02	31521-02	31532-02	31533-02
	T-joint			31432-02	31433-02
	Wall bend duct	31600-02	31610-02	31622-02	31623-02
	Wall duct		31670-02	31682-02	31683-02
	End cover	31360-02	31371-02	31382-02	31383-02

Installation possibilities for pipe combinations

**Copper pipe + Insulating thickness 9 mm
or
Pre-insulated copper tube**



Diameter of copper pipes		45x75	60x75	60x100
		Detachable strip	 31021-02 + 31075-04	 31032-02 + 31075-04
Single base plate		 31021-02 + 31175-04	 31032-02 + 31175-04	 31033-02 + 31101-04
Liquid	Gas			
 1x1	1/4" 3/8"			
	1/4" 1/2"			
	1/4" 5/8"			
 2x1	1/4" 3/8"			
	1/4" 1/2"			
 3x1	1/4" 3/8"			
	1/4" 1/2"			

Pair of pipes (liquid-gas)	Drain pipe Ø16 - 20 mm	The pipe insulator is compressed during assembly	Recommended installation	Only for straight sections

The information provided in this table is for indicative purposes only.

Unex aparellaje eléctrico, S.L. accepts no responsibility for the use of the table for calculations in connection with the installation.


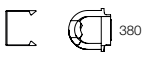
This table is the result of research by the Unex aparellaje eléctrico, S.L. technical department. Its full or partial reproduction without express authorization by Unex aparellaje eléctrico, S.L. is hereby forbidden.

NOTE: Pipe clamp part no. 31130-04 (35x35 mm) is suitable to carry waste and cooling pipes separately.

Useful cross-sections (mm²)

	Sizes (mm)	35x35	45x75	60x75	60x100
Grey RAL 7035 White RAL 9010		31010-02 + 31130-04	31021-02 + 31075-04	31032-02 + 31075-04	31033-02 + 31100-04
			31021-02 + 31175-04	31032-02 + 31175-04	31033-02 + 31101-04

Distribution

Pipe clamp + C-shape cover Drain pipe Ø16 - 20 mm					
Detachable strip or Single base plate + C-shape cover	