



Fastening  
system

# Fixings

# 25

raw material

**U63X**

**U64X**

colour

**Black**

**Grey**



# Wall plug 25

For fixing cables and conduits in all types of installations

- Combined use with Cable ties 22 in indoor and outdoor installations.
- Good outdoor performance and resistance to corrosion.
- Easy mounting, even at low temperatures.
- Good resistance to extraction.
- **Halogen free.**

## Raw material

**U63X**

Wall plug

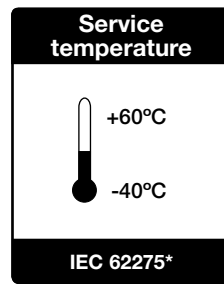
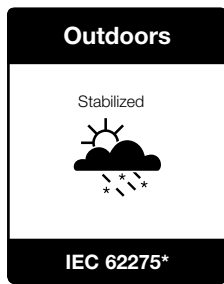
Compliant



## Black colour



## Technical characteristics



- For outdoor and indoor installations.

## Raw material

**U64X**

Wall plug

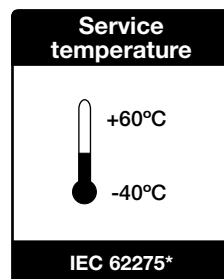
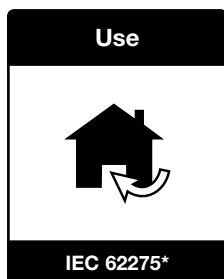
Compliant



## Grey RAL 7035 colour

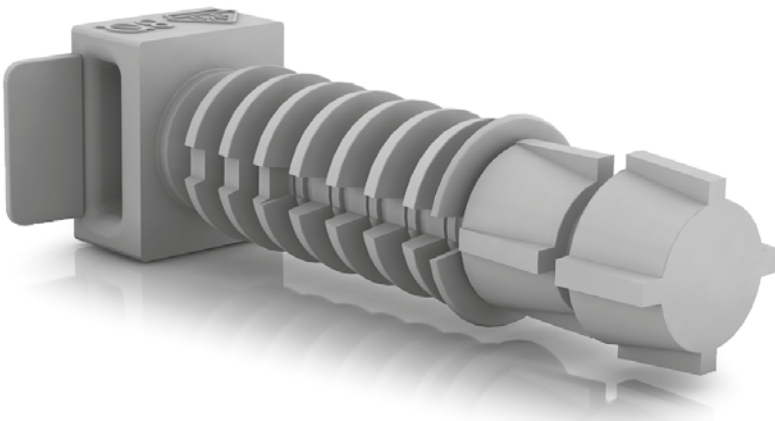


## Technical characteristics



- For indoor installations.

\* The values indicated according to IEC 62275 have been tested under the equivalent standard EN 62275. BS EN 62275 is the UK implementation of EN 62275 and IEC 62275.



Colour

**Black**

Grey

**RAL 7035**

Quality marks



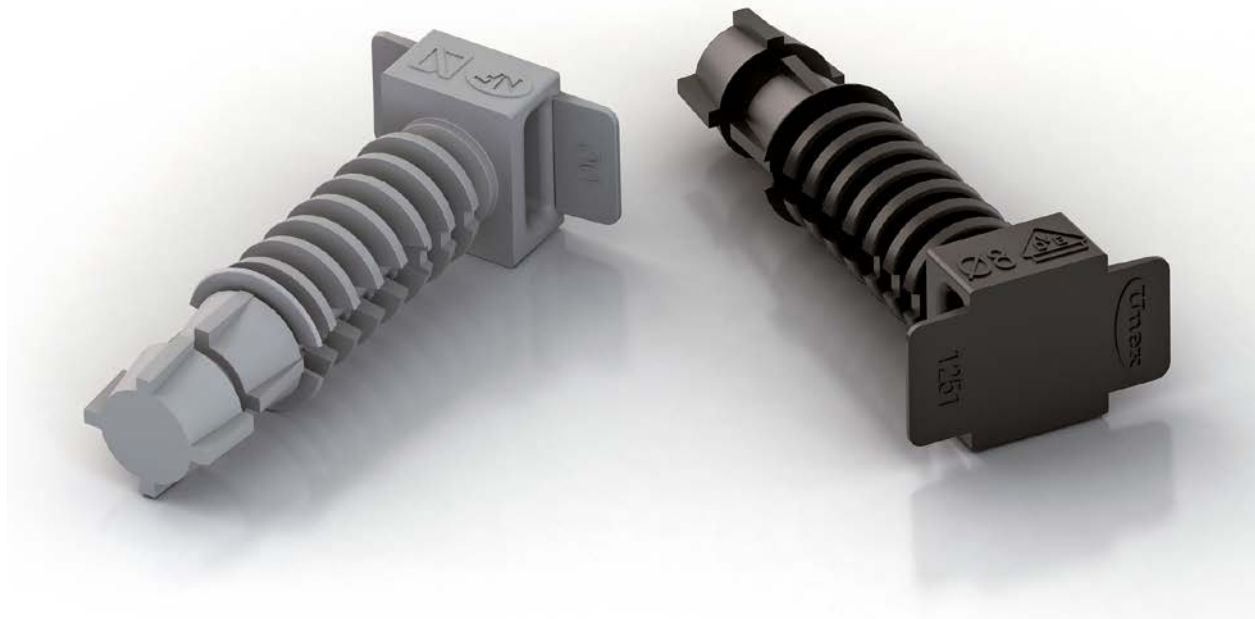
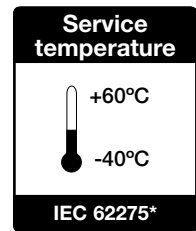
Conformity declaration



See updated technical information of each part number on [www.unex.net](http://www.unex.net)

# Complete product family for all types of installations

- To fix cables and pipes in outdoor and indoor installations.
- Available in black and grey RAL 7035 colours.
- Good resistance at low temperatures.



Compatible with Cable ties 22



\* The values indicated according to IEC 62275 have been tested under the equivalent standard EN 62275. BS EN 62275 is the UK implementation of EN 62275 and IEC 62275.

# A product with added value

## New design

The head and the axis of the plug ensure perfect fixation on any kind of wall. The plug can be inserted easily till the end.



## Maximum functionality of the head

The head of Unex plugs is designed to ensure the perfect fixing of the cable tie. Moreover, its flexible wings ease to better fix and fasten the tubes without damaging them.



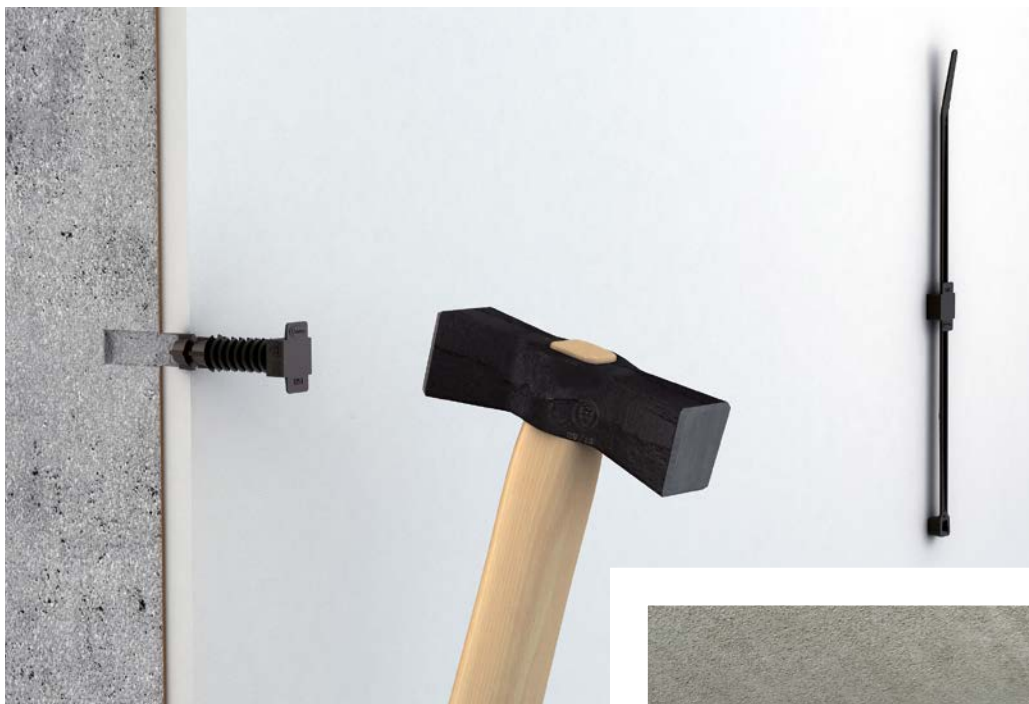
## Quality marks

The quality of Unex plugs is recognized by the most stringent quality marks.



## Easy mounting

During the preassembly, the head of the Unex wall plugs ensures that they remain fixed to the wall, with no need to insert them till the end, providing autonomy to the user while mounting.



For vertical mountings, the head of the plug remains fixed to the ceiling.



The Unex plug can be inserted easily into the wall due to the design of the helix, that ensures the grip of the plug and provides endurance to its extraction at the same time, even at low temperatures.



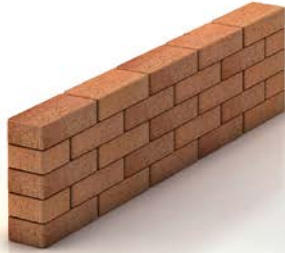
# Application

For outdoor and indoor mountings, Unex plugs can be used on any type of wall.

**Concrete**



**Solid brick**



**Concrete slab**



**Hollow brick**



Good performance in wet and corrosive environments.



# Nail mount 25

Complete solution for fixing cables and conduits in installations

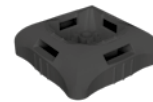
- **Compatible with the most common pneumatic nailguns.**
- Easy mounting:
  - Firm fixing to the nailer's nozzle.
  - Possibility to flange from both sides.
- Compatible with Cable ties 22 (2.5 mm., 3.6 mm., 4.8 mm. and 7.6 mm. of width).

Raw material

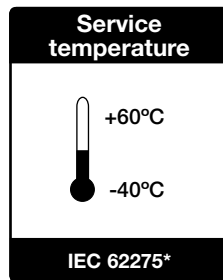
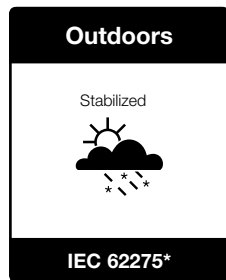
Black colour

**U63X** Nail mount

Compliant



## Technical characteristics



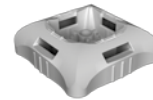
- For outdoor and indoor installations.

Raw material

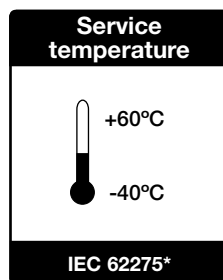
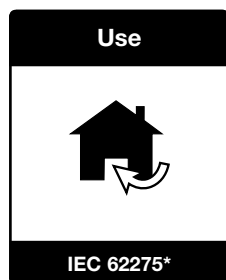
Grey RAL 7035 colour

**U64X** Nail mount

Compliant

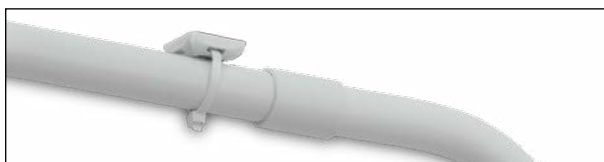


## Technical characteristics



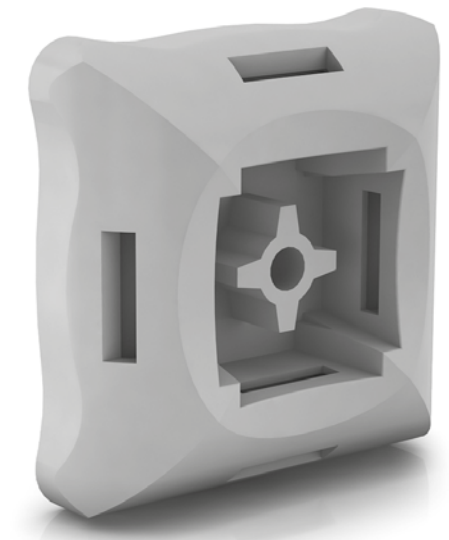
- For indoor installations.

# Application



\* The values indicated according to IEC 62275 have been tested under the equivalent standard EN 62275. BS EN 62275 is the UK implementation of EN 62275 and IEC 62275.





Colour

**Black**

Grey

**RAL 7035**

Quality marks



Conformity declaration



See updated technical information of each part number on [www.unex.net](http://www.unex.net)

# Trunking plug 25

For fixing Unex trunkings and modular boxes

---

- For indoor installations.
- Easy to mount and remove.
- Applicable to the most usual types of wall.
- Assures electrical safety.
- **Halogen free.**

## Raw material

---

**U63X**

Trunking plug

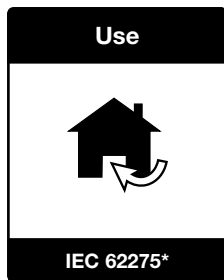


Compliant



## Technical characteristics

---



- For indoor installations.

## Electrical safety



The installation is protected against electrical contacts.  
The plug covers completely the head of the metallic screw.

## Packaging



Reusable flap, acting as a toolbox.  
Facilitates access to the product.

\* The values indicated according to IEC 62275 have been tested under the equivalent standard EN 62275. BS EN 62275 is the UK implementation of EN 62275 and IEC 62275.



Colour

**Black**

Quality marks



Conformity declaration



See updated technical  
information of each  
part number on  
[www.unex.net](http://www.unex.net)

		Ø4 mm.	Ø6 mm.	Ø8 mm.
<p><b>U63X</b> Black</p>	Cable tie wall plug (surface)			1250 (1)
<p><b>U63X</b> Black</p>	Cable tie wall plug (flush)		1253 (2)	1251 (1)
<p><b>U64X</b> Grey RAL 7035</p>			1253-3 (2) (4)	1251-3 (1) (4)
<p><b>U63X</b> Black</p>	Cable tie surface mount		1252 (3)	
<p><b>U63X</b> Black</p>	Trunking plug	25104 (4)	25106 (4)	
<p><b>U63X</b> Black</p>	Nail mount	25501		
<p><b>U64X</b> Grey RAL 7035</p>		25501-3 (4)		

- (1) Soft walls: Drill bit Ø7. Hard walls: Drill bit Ø8.
- (2) Soft walls: Drill bit Ø5. Hard walls: Drill bit Ø6.
- (3) To bolt on M6 or W 1/4 bolt. Diameter fixing hole 4 mm.
- (4) For indoor installations.