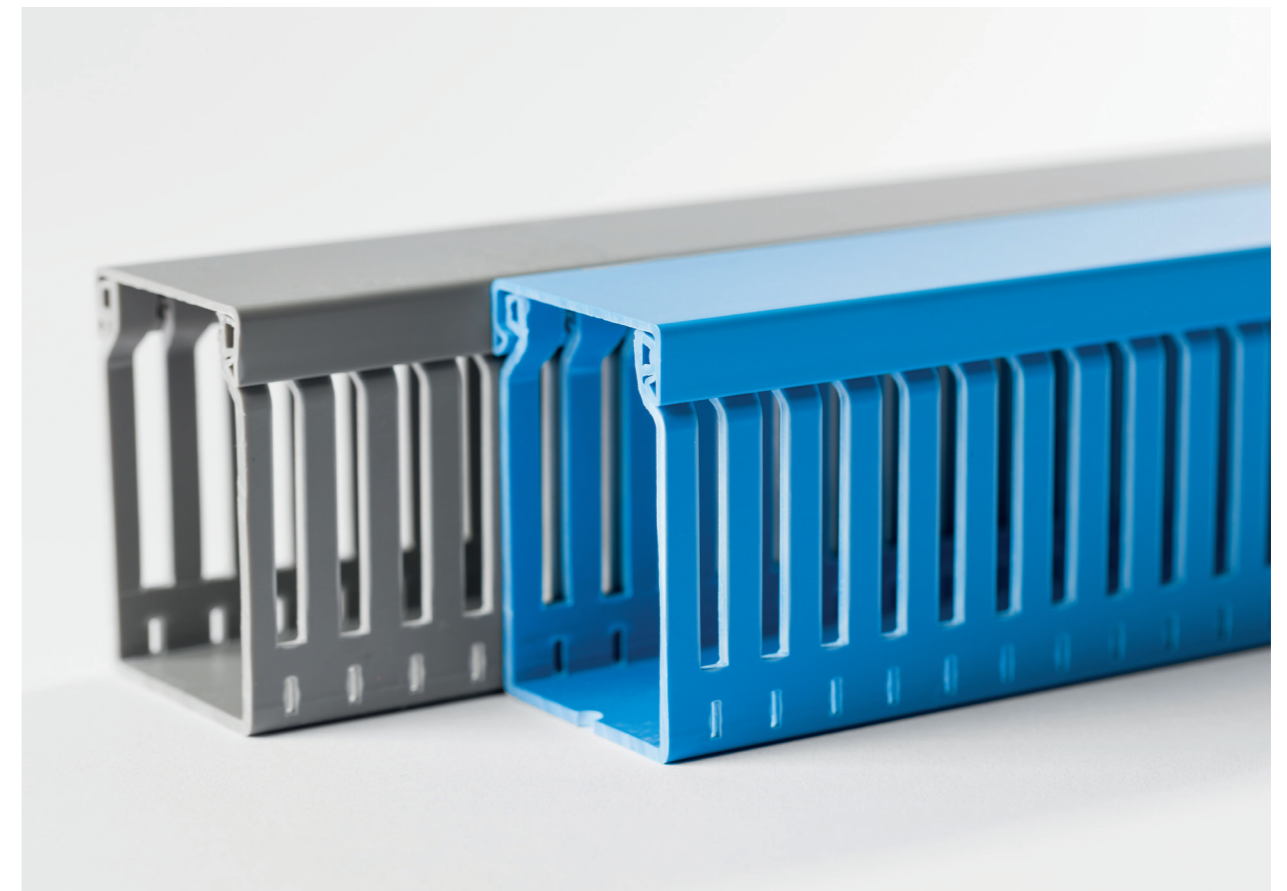


Fabricante especialista
desde 1964

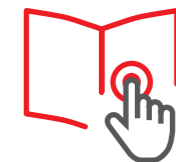


Calhas

77

Condução de cabos em quadros
elétricos e de comunicações

Informação de gama



Sistema robusto.
Fácil montagem e desmontagem da tampa,
com grande segurança de fecho.
Possibilidade de corte das linguetas até à base.

Componente termoplástico: PVC

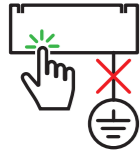
U23X

Valor acrescentado



Características técnicas

ELÉTRICA



Não necessita ligação à terra ou ligação equipotencial.

TEMPERATURA



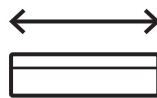
Temperatura mínima de armazenagem e transporte: -45°C
Temperatura máxima de utilização: 60°C

FOGO



Não propagador da chama.

COMPRIMENTO



2 m

CSA



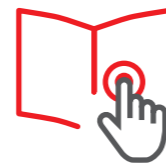
Calha cinzento.

MARCA CE



Conformidade com a norma EN 50085-2-3 : 2010.

Informação detalhada na ficha técnica



Declaração de conformidade

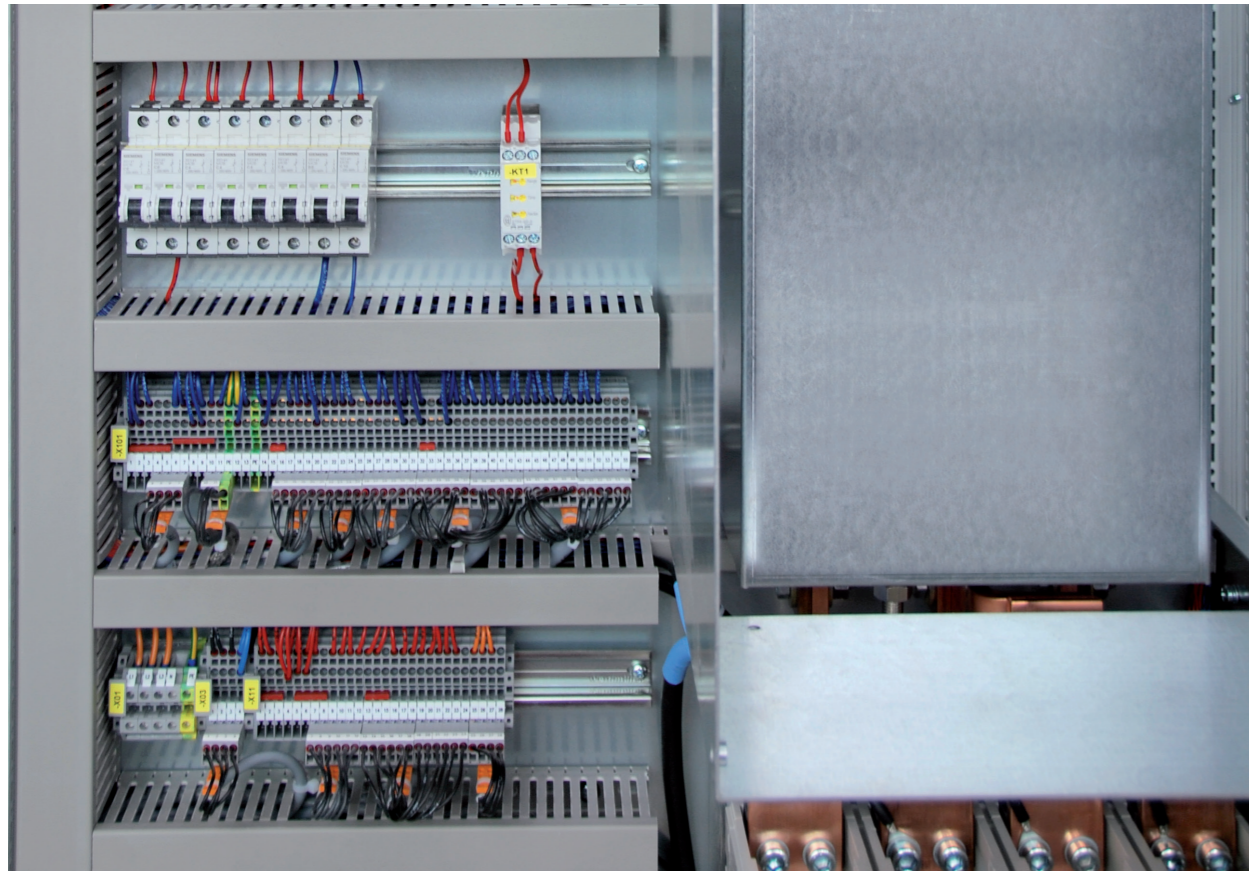


Marcas de qualidade



Homologações





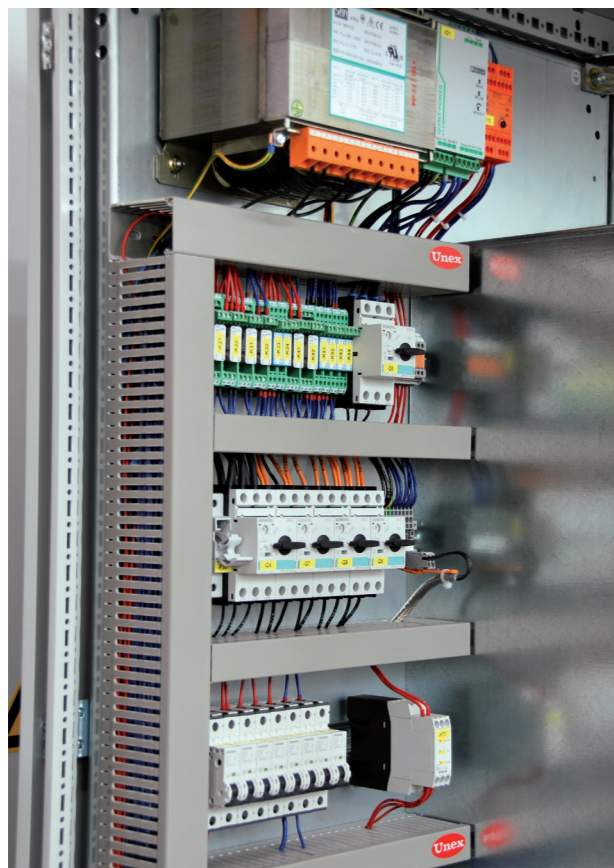
Máquinas e equipamentos



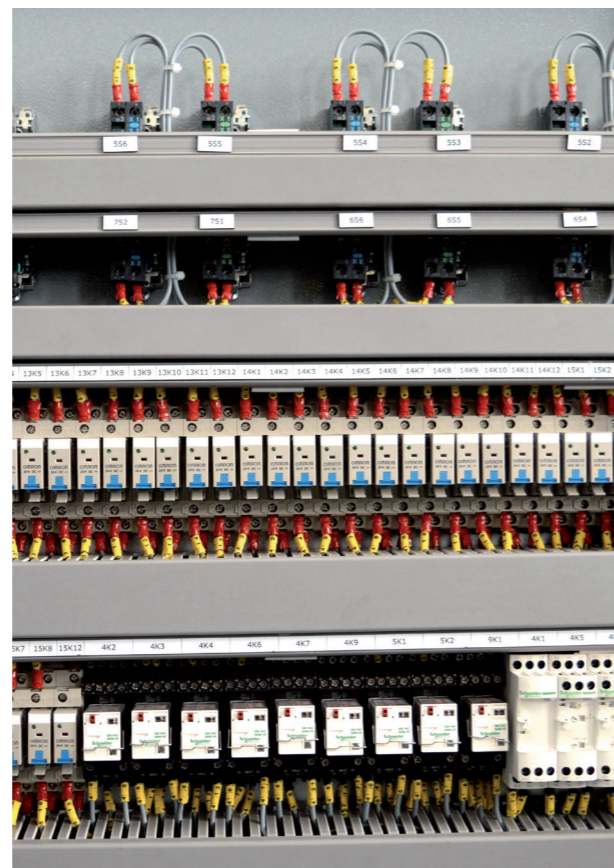
Indústria petroquímica



Indústria petroquímica



Máquinas e equipamentos



Construção naval

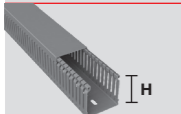




Tratamento de águas

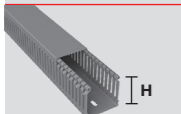


Alturas (H): 18, 25, 30, 40 mm

		Dimensões (mm)		18x20	25x20	33x30	42x20	42x30	42x43	42x60	
	Calha 2 m	18.20.77		18.20.77	25.20.77	30.30.77	40.20.77	40.30.77	40.40.77	40.60.77	
		80 m. 3 €/m.		60 m. 3,26 €/m.		60 m. 4,53 €/m.	72 m. 4,44 €/m.	48 m. 5,55 €/m.	32 m. 6,39 €/m.	24 m. 7,85 €/m.	
	Retentor compactador					40850		40850			
						48 u. 1,06 €/u.		48 u. 1,06 €/u.			

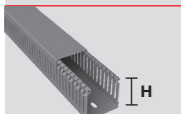


Altura (H) 60 mm

		Dimensões (mm)		60x20	60x30	60x43	60x60	60x80	60x100	60x120
	Calha 2 m	60.20.77		60.20.77	60.30.77	60.40.77	60.60.77	60.80.77	60.100.77	60.120.77
		48 m. 6,03 €/m.		36 m. 7,10 €/m.		32 m. 7,88 €/m.	32 m. 9,27 €/m.	32 m. 11,27 €/m.	12 m. 14,21 €/m.	12 m. 15,97 €/m.
	Ponte retentora					40864	40865	40864 + 40864	40864 + 40865	40865 + 40865
						48 u. 1,30 €/u.	48 u. 1,35 €/u.	48 u. 1,30 €/u.	48 u. 1,30 €/u. 48 u. 1,35 €/u.	48 u. 1,35 €/u.
	Retentor compactador				40850	40850				
					48 u. 1,06 €/u.	48 u. 1,06 €/u.				

Altura (H) 80 mm

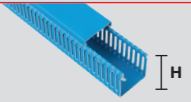

		Dimensões (mm)		80x30	80x43	80x60	80x80	80x100	80x120	
	Calha 2 m	80.30.77		80.30.77	80.40.77	80.60.77	80.80.77	80.100.77	80.120.77	
		28 m. 9,14 €/m.		24 m. 9,37 €/m.		24 m. 11,07 €/m.	24 m. 13,36 €/m.	12 m. 16,89 €/m.	12 m. 18,64 €/m.	
	Ponte retentora				40884	40885	40884 + 40884	40884 + 40885	40885 + 40885	
					48 u. 1,32 €/u.	48 u. 1,42 €/u.	48 u. 1,32 €/u.	48 u. 1,32 €/u. 48 u. 1,42 €/u.	48 u. 1,42 €/u.	
	Retentor compactador	40850				40850				
		48 u. 1,06 €/u.				48 u. 1,06 €/u.				

Altura (H) 100 mm

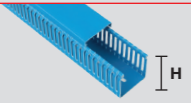


		Dimensões (mm)		100x43	100x60	100x80	100x100	100x150	
	Calha 2 m	100.40.77		100.40.77	100.60.77	100.80.77	100.100.77	100.150.77	
		16 m. 15,99 €/m.		16 m. 17,16 €/m.		16 m. 19,58 €/m.	8 m. 21,42 €/m.	8 m. 39,13 €/m.	
	Ponte retentora	40894			40895	40894 + 40894	40894 + 40895		
		48 u. 1,79 €/u.			48 u. 1,90 €/u.	48 u. 1,79 €/u.	48 u. 1,79 €/u. 48 u. 1,90 €/u.		
	Retentor compactador	40850				40850			
		48 u. 1,06 €/u.				48 u. 1,06 €/u.			

Continua na página seguinte 

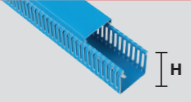


Altura (H) 40 mm

		Dimensões (mm)	40x30
	Calha 2 m		774030-06
			48 m. 9,25 €/m.
	Retentor compactador		40850
			48 u. 1,06 €/u.

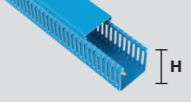


Altura (H) 60 mm

		Dimensões (mm)	60x40	60x60
	Calha 2 m		776040-06	776060-06
			32 m. 12,02 €/m.	32 m. 14,41 €/m.
	Ponte retentora		40864	40865
			48 u. 1,30 €/u.	48 u. 1,35 €/u.
	Retentor compactador		40850	
			48 u. 1,06 €/u.	

Altura (H) 80 mm

		Dimensões (mm)	80x30	80x40	80x60	80x80	80x100	80x120
	Calha 2 m		778030-06	778040-06	778060-06	778080-06	7780100-06	7780120-06
			28 m. 14,22 €/m.	24 m. 14,95 €/m.	24 m. 17,68 €/m.	24 m. 21,18 €/m.	12 m. 25,27 €/m.	12 m. 28,39 €/m.
	Ponte retentora			40884	40885	40884 + 40884	40884 + 40885	40885 + 40885
				48 u. 1,32 €/u.	48 u. 1,42 €/u.	48 u. 1,32 €/u.	48 u. 1,32 €/u. 48 u. 1,42 €/u.	48 u. 1,42 €/u.
	Retentor compactador		40850		40850			
			48 u. 1,06 €/u.		48 u. 1,06 €/u.			

Altura (H) 100 mm

		Dimensões (mm)	100x40	100x60	100x80	100x100
	Calha 2 m		7710040-06	7710060-06	7710080-06	77100100-06
			16 m. 26,72 €/m.	16 m. 28,66 €/m.	16 m. 32,68 €/m.	8 m. 35,78 €/m.
	Ponte retentora		40894	40895	40894 + 40894	40894 + 40895
			48 u. 1,79 €/u.	48 u. 1,90 €/u.	48 u. 1,79 €/u.	48 u. 1,79 €/u. 48 u. 1,90 €/u.
	Retentor compactador		40850		40850	
			48 u. 1,06 €/u.		48 u. 1,06 €/u.	

Continua na página seguinte 

Elementos funcionais (1)

	Suporte perfil porta-etiquetas	40801-44
		100 u. 68,48 €/100 u.
	Perfil porta-etiquetas 2 m	40802-44
		30 m. 3,39 €/m.



Elementos de montagem em **UGOX**

	Rebite plástico A = 6 mm Ø B = 6 mm Ø C = 3,0-3,25 mm D = 1-3 mm A = 8 mm Ø B = 11 mm Ø C = 5,1-5,25 mm D = 2-5 mm A = 12 mm Ø B = 11 mm Ø C = 6,1-6,5 mm D = 5-9 mm A = 21 mm Ø B = 11 mm Ø C = 6,1-6,5 mm D = 10-18 mm	1303 (2)
		5000 u. 5,10 €/100 u.
		1305
		1000 u. 7,88 €/100 u.
	Ferramenta rebite Aplicação rebites ref. 1305, 1309 e 1318. L = 225 mm Aplicação rebites ref. 1303 L = 120 mm	1309
		1000 u. 11,54 €/100 u.
		1318
		1000 u. 16,41 €/100 u.
		1300
		1 u. 70,07 €/u.
		1301
		1 u. 40,92 €/u.

Ferramenta

	Ferramenta de corte (3) Para cortar as calhas	40902
		1 u. 172,94 €/u.

Tampas de substituição

	Tampa	Ver tabela página 300-301
--	-------	---------------------------

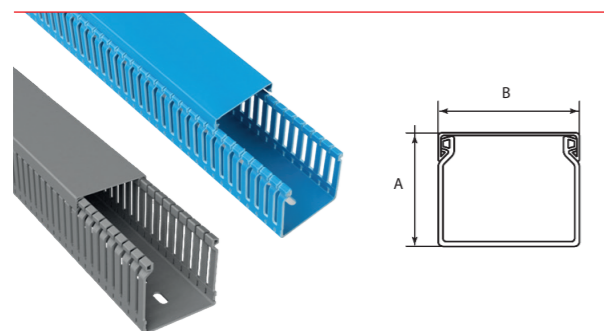
Notas:

- (1) Exceto para ref. 18.20.77 e ref. 100.150.77.
- (2) Para fixar etiquetas. Não utilizar para a fixação de calhas.
- (3) Cortes a 90° para calhas largura ≤ 60 mm. Cortes a 45° para calhas ≤ 40 mm.

Dimensões (mm)

Ref.	Cinzento RAL 7030	Azul RAL 5012	Dimensões da base		Tipo perfuração	Emb. m
			A	B		
18.20.77			18	20	1	80
25.20.77			25	20	1	60
30.30.77			33	30	1	60
40.20.77			42	20	1	72
40.30.77			42	30	1	48
40.40.77			42	43	1	32
40.60.77			42	60	1	24
60.20.77			60	20	1	48
60.30.77			60	30	1	36
60.40.77		776040-06	60	43	1	32
60.60.77		776060-06	60	60	1	32
60.80.77			60	80	2	32
60.100.77			60	100	2	12
60.120.77			60	120	2	12
80.30.77		778030-06	80	30	1	28
80.40.77		778040-06	80	43	1	24
80.60.77		778060-06	80	60	1	24
80.80.77		778080-06	80	80	2	24
80.100.77		7780100-06	80	100	2	12
80.120.77		7780120-06	80	120	2	12
100.40.77			100	43	1	16
100.60.77			100	60	1	16
100.80.77			100	80	2	16
100.100.77			100	100	2	8
100.150.77			100	150	3	8

Material: U23X



Comprimento: 2 m
Base perfurada compatível com norma EN 50085-2-3

